



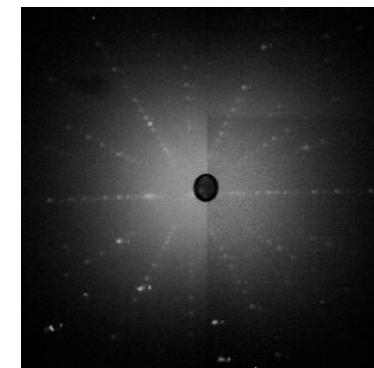
Laboratory for Single Crystals Growth and Characterization

Optical Floating Zone Furnace

Back Reflection Laue Camera System



- X-ray source : Mo
- Beam size: 0.2-0.5 mm
- Detector :  CCD (100 x 150 mm²)
- Flux:  4×10^8 photon/mm²/sec

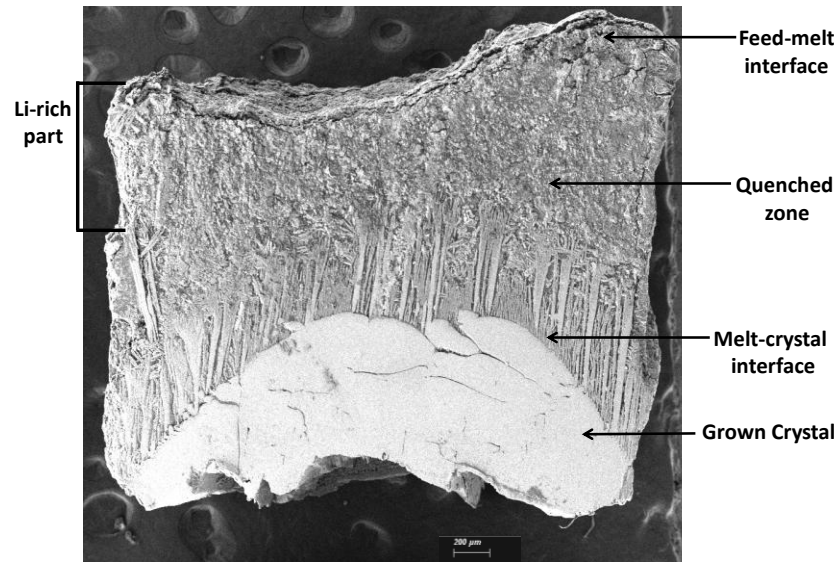
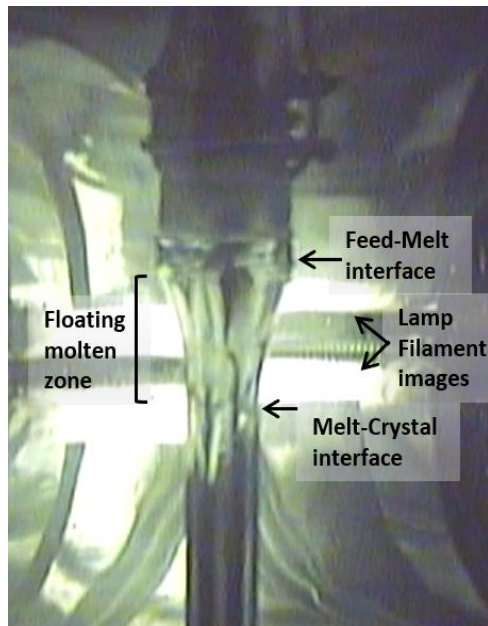
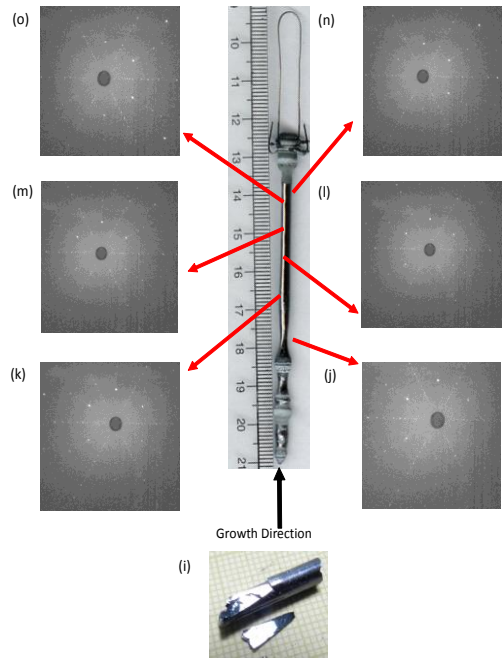


- No. of Mirrors : 4 (with 4 Halogen Lamps)
- Max. Temperature : 2200° C
- Max Pressure: 9.5 bar
- Max Vacuum : 5×10^{-5} Torr
- Max Crystal Length: 150 mm
- Sample chamber can be filled with inert, reductive, oxidizing atmosphere

LiCoO₂: Cathode material for Li-ion battery



LiCoO₂: Cathode material for Li-ion battery



SEM image of the quenched zone