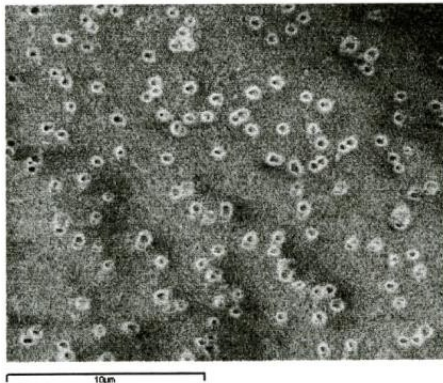


Track Membrane Set-Up

- ❖ The setup for the large scale production of TEMs consists of a magnetic beam scanner, horn chamber and a rolling mechanism. This set up is being used since November 01, 2007 and continuously customized as per user requirements.
- ❖ Pore density and pore size; 10^6 - 10^8 pores/cm² and 0.8-1.6 microns.
- ❖ These membranes have been utilized for various applications.

SEM Photograph



Film Roller



Large scale TEM

