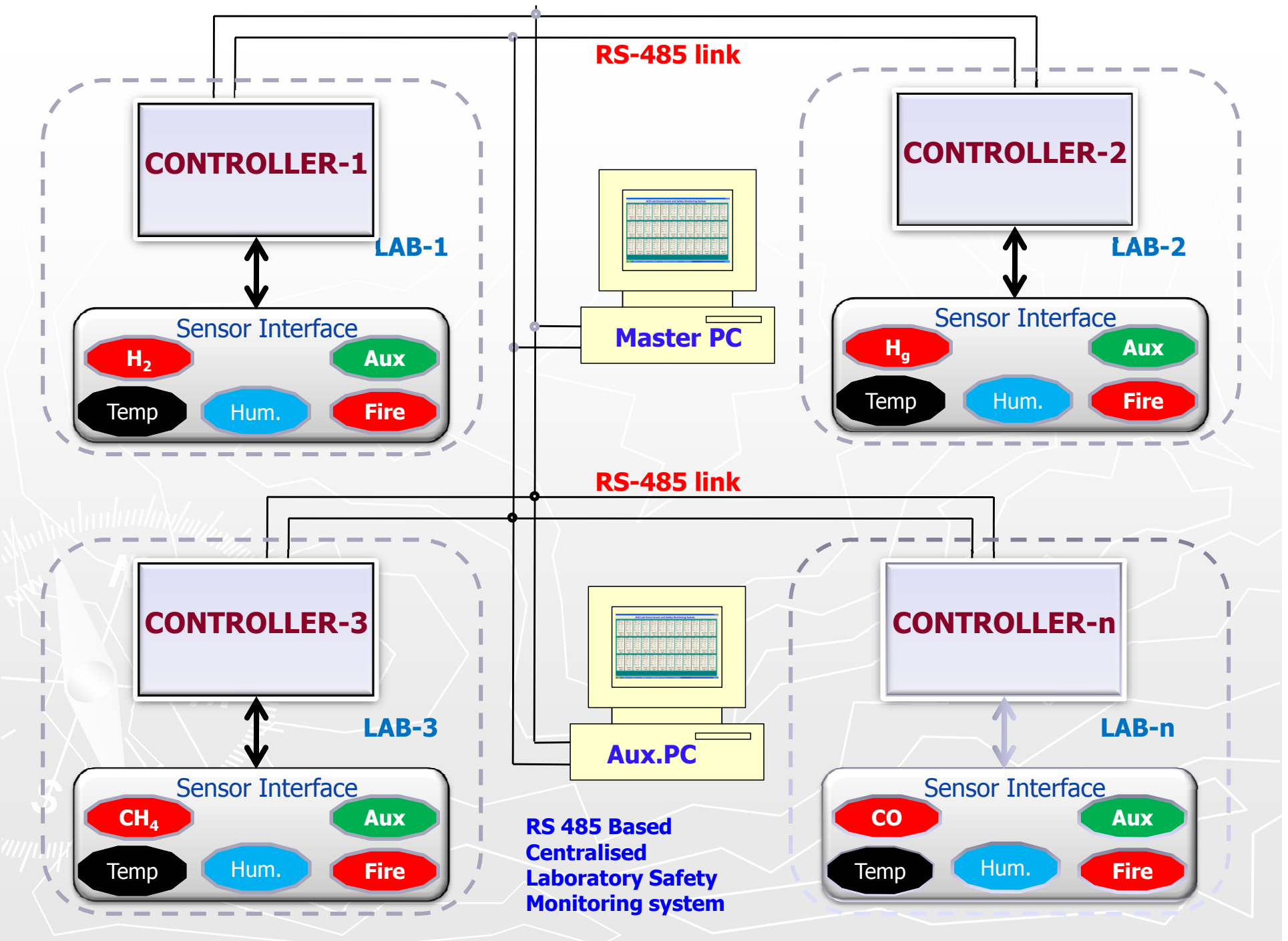
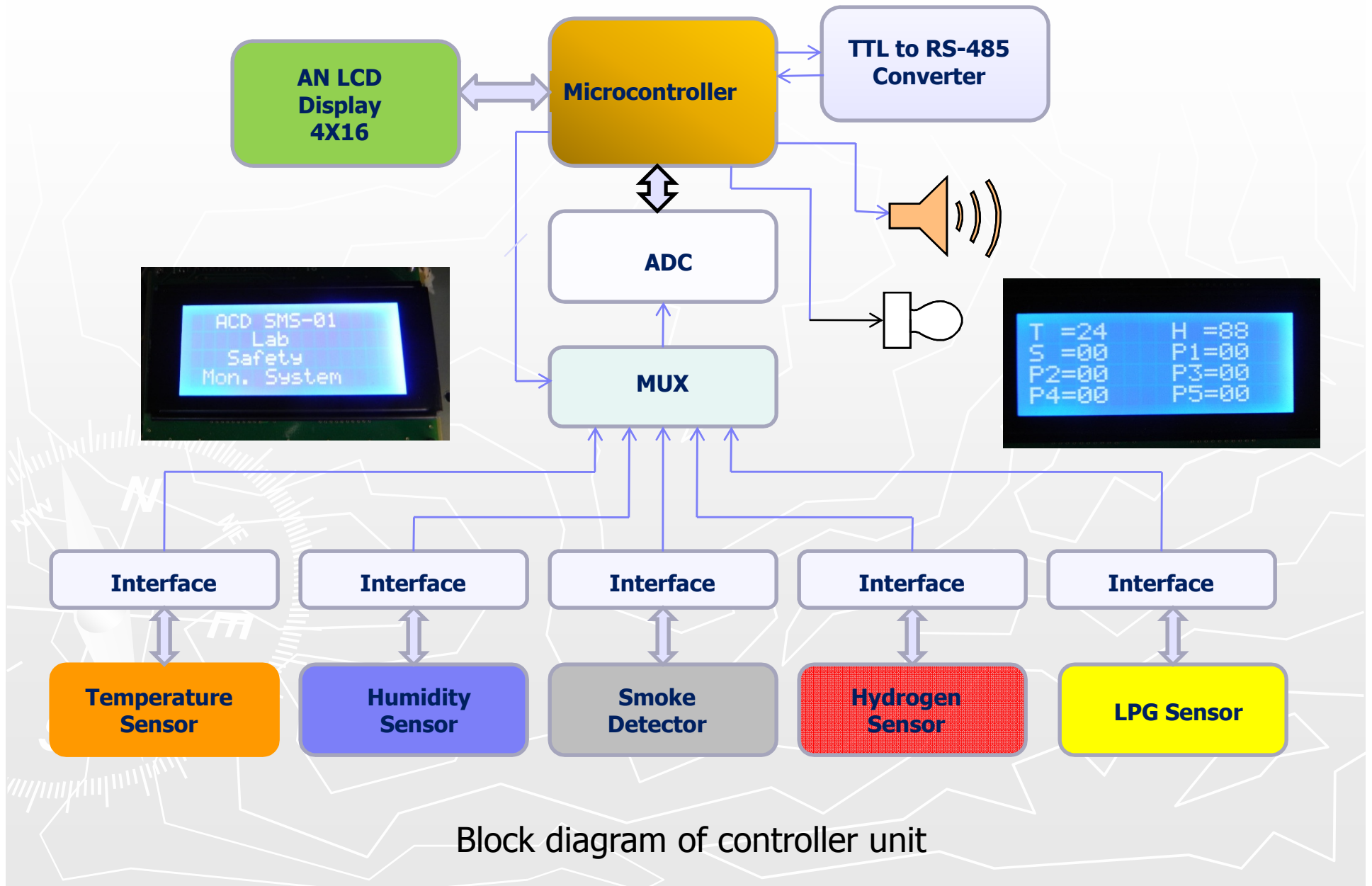


RS485 Based Centralised Laboratory Safety Monitoring system

- **A centralised multi parameter laboratory environment monitoring & recording system with local as well as centralised alarm facilities has been designed, developed, fabricated and deployed.**
- **Each laboratory has been equipped with a compact controller unit with local display and with provision for 5 sensor inputs namely temperature, humidity & smoke sensors as well as provision for two more extra sensors.**
- **All the monitoring stations in the Division have been inter-connected through a two wire RS-485 based network to a centralised PC based controller unit with in-house developed front end software.**

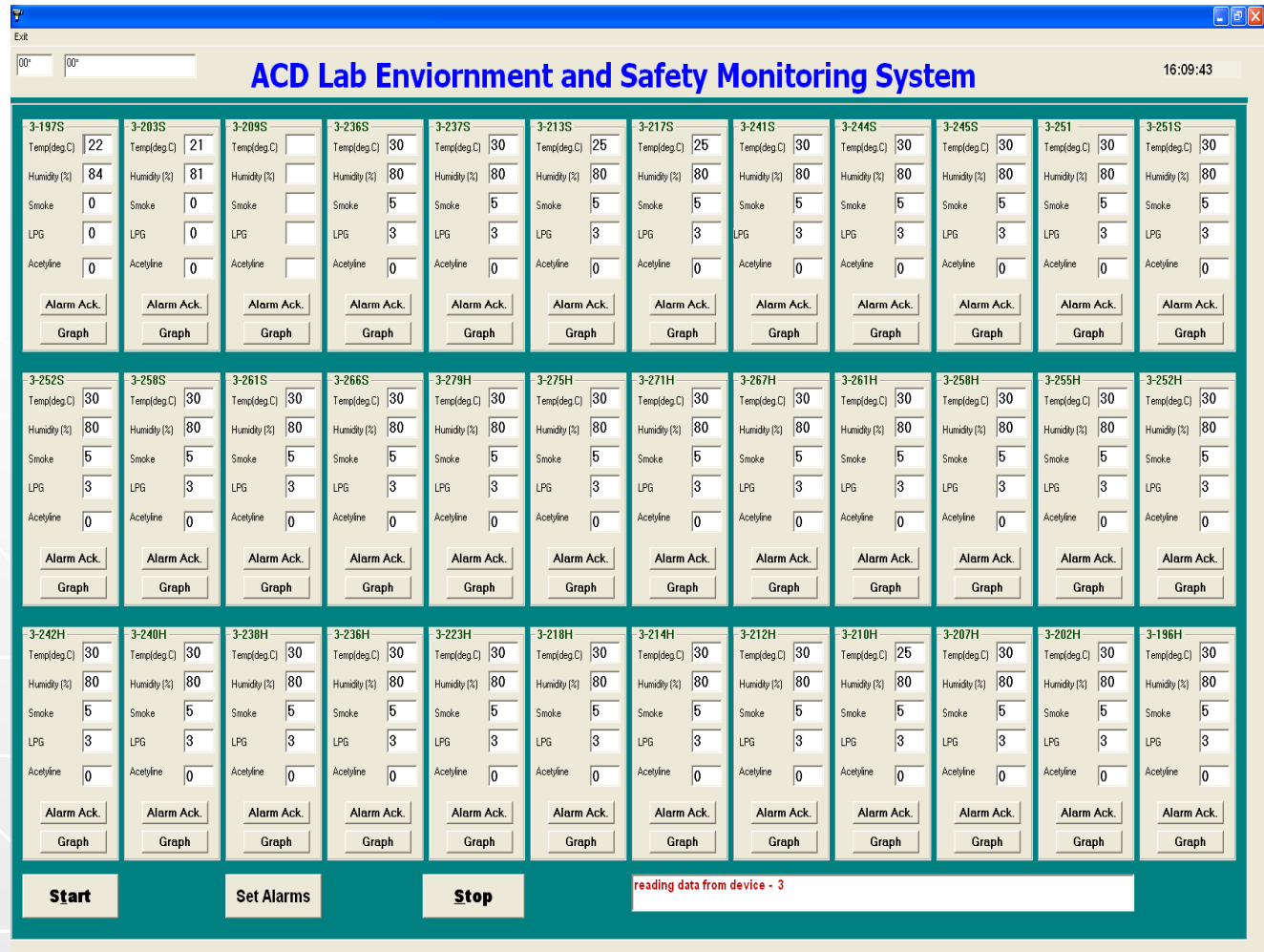


Electronics & Instrumentation





Compact controller unit with local display, audio visual alarm and Temperature, humidity and smoke sensors deployed in each laboratory



Centralised multi parameter display & recording of individual laboratory environment data