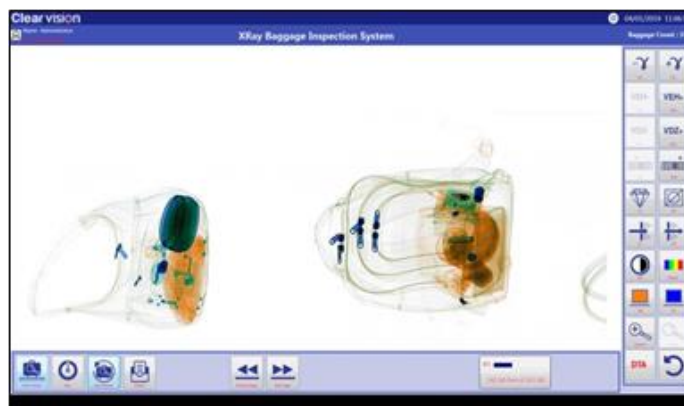


X-Ray baggage Inspection system

X-Ray baggage Inspection system provides enhanced and reliable screening at critical points-of-entry, using the penetrating power and material discrimination capability of dual energy X-Ray. The material discrimination algorithm is based on behavior of low to high Z materials like Perspex, Aluminium and Steel for X-Rays of different energies. The algorithm has been verified to meet the X-Ray Image Quality Index of Wire resolution, Horizontal and vertical Spatial resolution, Penetration, Contrast Sensitivity and Thin metal imaging for X-Ray baggage scanner. User authentication is provided, along with Maintenance mode for easy troubleshooting and Operating System access control for inadvertent user access prevention. Automated Threat Detection feature has been developed using deep learning and it has been integrated with X-Ray baggage scanner software.



XBIS System, UI and the various image processing options



Color



Colour Stripping



Inorganic



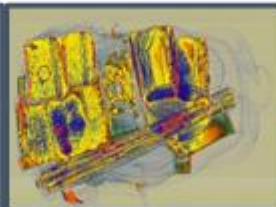
Organic



Black and white



Clear Contrast



Pseudo Colour



TIP Mode