

**Government of India
Bhabha Atomic Research Centre
Pulsed Power & Electromagnetics Division**

Ref: BARC(V)/PP&EMD/2020-21/R&D44/MF/BLS/60

date: 08-12-2021

To

Sub: Fabrication and supply of work bench, surface plate with stand as per the drawings and specifications.

Dear Sir

- Quotations are invited for the minor fabrication job, as per the enclosed specification.
- Bidder shall quote for the fabrication with the mention of the components with materials. It should clearly indicate with details that it fulfils or not all our requirements as mentioned in our specifications.
- Taxes shall be quoted separately.
- The quotation must reach the Head, ESDS, BARC(V) by 28-12-2021 and must be sent in a sealed, printed envelope superscripted with reference number and the due date as is given above.
- The address of the envelop should read –

Head, ESDS

Kind attn: Bijayalaxmi Sethi

PEB-1

Bhabha Atomic Research Centre

Gajuwaka- Yellamanchali Road

Near Nagavaram Junction

Atchutapuram

Visakhapatnam – 531011

- The components for the fabrication work shall be subjected to inspection by our Engineer. The component shall not be dispatched prior to approval of our engineer at bidder's premises. Necessary inspection facilities should be provided to our engineer during inspection at bidder's premises.
- The bidder shall complete the work within 10 weeks from the date of work order issued to the bidder.
- Head, ESDS reserves the rights to accept/ reject any or all quotations without assigning any reasons.
- Delivery charges if any, must be clearly mentioned with the offer.
- Quotation must also indicate the validity of offer. Vendors are requested to give at least 60 days of validity for their quotations.
- Drawing / sketches must be returned along with the offer.
- Quotations are to be in printed letter-head / quotation format only
- Quotation should consist of GST registration number & PAN number of the firm.



Head, ESDS

BARCF, Visakhapatnam

डॉ. रूषि वर्मा / Dr. RISHI VERMA
अध्यक्ष, एनर्जेटिक्स प्रणाली विकास अनुभाग (पीपीएडुएमडी)
Head, Energetics System Development Section (PP&EMD)
भाभा परमाणु अनुसंधान केंद्र (भारत सरकार)
Bhabha Atomic Research Centre (Government of India)
विशाखपट्टणम / VISAKHAPATNAM-531011

Annexure-I specification
General Terms and Conditions

1. Quality surveillance, inspection and inspection report

- 1.0 All work covered by the inspections shall be subjected to quality surveillance by the purchaser or his authorized representatives for which purpose the fabricator shall allow access at all reasonable times during manufacture to.
- 1.1 The premises in which the work is being carried out.
- 1.2 The drawings and or tooling involved.
- 1.3 Gauges, instruments etc. required for inspecting the work.
- 1.4 Inspection and tests shall be carried out by the fabricator as per the requirements detailed in the drawings and these specifications.
- 1.5 The fabricator shall submit inspection reports to the purchaser for approval.
- 1.6 Components found unsatisfactory as to workmanship or material shall be removed by the fabricator and replaced by the components which are satisfactory.
- 1.7 The finished components shall not be dispatched prior to approval by our Engineer.

2. Raw Material

- 2.0 Raw Material for all the components and hardware will be provided by the supplier.

3. Delivery

- 3.0 The bidder shall deliver the finished components after approval by our Engineer within 10 weeks from the date of work order at BARC, Visakhapatnam.
- 3.1 In case any extension in delivery is to be granted to the contractor, party shall make a written request for extension justifying the reasons.

4. Sub Contract

- 4.0 The fabricator shall not sub-contract any or all the work without written consent from the purchaser. The fabricator shall be responsible to the purchaser for the entire sub contractor of the fabricator, if at all allowed by the purchaser.

5. Taxes

- 5.0 GST @ 5% as applicable against undertaking from the supplier.

6. Payment

- 6.0 Payment will be made within one month only after satisfactory completion of work and on production of invoice with details of location of supply, separate tax components along with PAN & GSTN, advance stamped receipt (Annexure-III), 4 nos. of One year Guarantee/ Warranty Certificates, Bank details & receipt and issue of material from store.
- 6.1 Advance / Part payment or against delivery cannot be made.
- 6.2 It may be noted that Income Tax at 2% will be deducted from the bill.
- 6.3 TDS is to be deducted at the rate of 1 percent on payments made to the supplier of taxable goods and/or services, where the total value of such supply, under an individual contract, exceeds two lakh fifty thousand rupees.
- 6.4 Any delay which is attributable to the contractor is liable for penalty @ 2% per week (max 5%) to be imposed on the contractor.

7. Confidentiality:

7.0 No party shall disclose any information to third party concerning the matters under this contract generally. In particular, any information identified as "PROPRIETARY" in nature by the disclosing party shall be kept strictly confidential by the receiving party and shall not be disclosed to any third party without the prior written consent of the original disclosing party.

7.1 "RESTRICTED INFORMATION" categories under section 18 of the Atomic Energy Act, 1962 and "OFFICIAL SECRETS" under section 5 of the Official Secrets Act, 1923:-

Any contravention of the above mentioned provisions by any contractor, sub-contractor, consultant, advisor or the any employees of a contractor will invite penal consequences under the aforesaid legislation.

7.2 Prohibition against use of BARC's name without permission for publicity purpose:-

The contractor or sub-contractor, consultant, advisor or the employees engaged by the contractor shall not use BARC's name for publicity through any public media like press, radio, T.V., or internet without the prior written approval from BARC

(vide circular ref: 2/Misc-9/Lg1/2001/92 dated April 30, 2001)

8. Acceptance criteria:-

- **Dimensions of components as per drawings.**
- **Standard product of Pillar drilling machine, Bench grinder, Machine Bench vice and Heavy duty drill vice should be provided.**
- **All nuts, bolts and washers that are required in the assembly is to be supplied by the fabricator.**
- **Fittings and modification of machining works should be done by fabricator at PEB-2, BARC, Atchutapuram.**

Specification sheet for scope of work

Description of work:

1. Supply of work bench, surface plate with stand as per the drawings and specifications.as per Annexure –1 (technical specification).
2. All necessary nuts, bolts, washers etc required for making/ integrating the assembly is within the scope of supply of fabricator.

TECHNICAL SPECIFICATION

1) Pillar Drilling Machine as per the following specifications

Make BOSCH or equivalent

1. Type of drilling machine- Pillar
2. Drilling Capacity – 12mm (Steel) or more
3. Base Plate - 200 x 300 mm or more
4. Table Size - 200 x 200 mm or more
5. Weight – ~40 - 50 Kgs
6. Distance between Spindle Center to Column Face ~150 mm
7. Max. Distance between Drill Chuck Face to Table Face - 280 mm
8. Spindle Travel - 70 mm or more
9. Column Diameter- 42 mm or more
10. Maximum Distance between Spindle to Base - 400 mm or more
11. Numbers of Spindle Speeds – 4
12. Range of Spindle Speed – 500 (or less)-2500 (or more) rpm
13. Power of the Spindle Drive Motor ~ 0.5HP
14. Power of the Spindle Drive Motor - 3 phase/single phase
15. Approximate dimensions L 750 x W 335 x H 375

2) Bench Grinder as per the following specifications

Make BOSCH or equivalent

- a. Grinding wheel diameter: 200 mm
- b. Rated input power: 600 W
- c. Grinding wheel widths: 25 mm
- d. No-load speed: 3,600 rpm
- e. Grinding wheel bore: 32 mm
- f. Grit: 24, 60
- g. Weight: 15 kg
- h. Dimensions: 370 mm x 230 mm x 260 mm

3) Bench Vice

Specifications:

Size : 4"

Width of jaws (in mm): 100

Opening of jaws (in mm): 120

Depth of jaws (in mm): 70

Weight (approx. In kgs): ~ 15 kg

4) Heavy Duty Drill Vice

Specifications:

Size : 4"

Width of jaws (in mm): 100

Opening of jaws (in mm): 115

Depth of jaws (in mm): 60

Weight (approx. In kgs): ~ 8.5 kg

5) Hexagonal head Bolt, Nut and 2 Washers/bolt

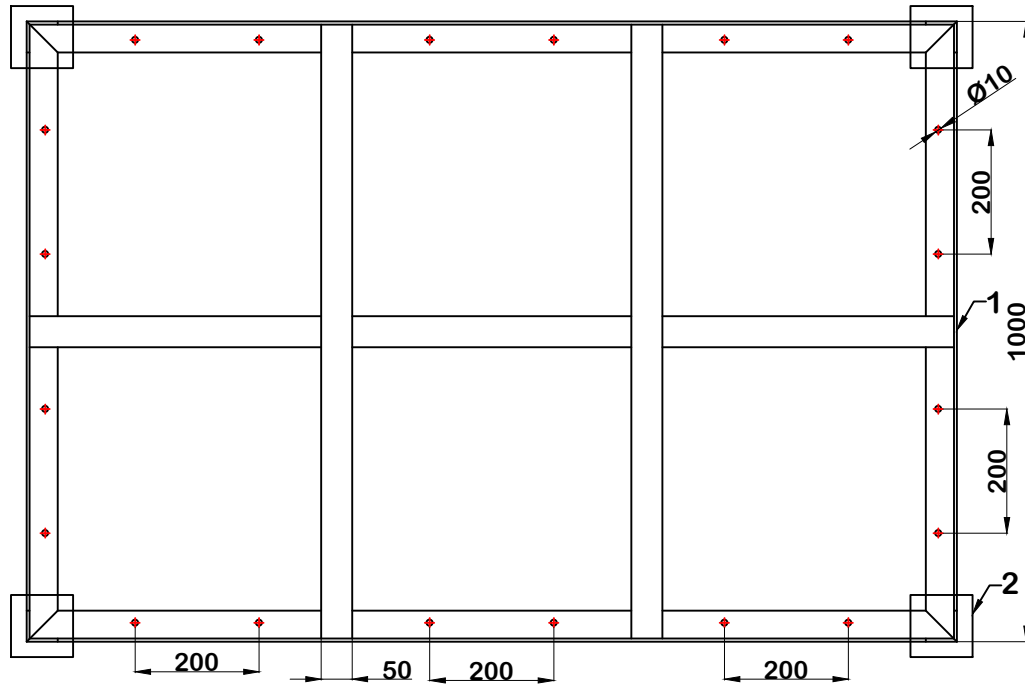
Stainless Steel 304 Fasteners

NOMINAL SIZE (D)	LENGTH (mm)				QUANTITY
M4	40	50	60	80	100 nos.
M5	40	50	60	80	100 nos.
M6	40	50	60	80	100 nos.
M8	40	60	80	100	100 nos.
M10	40	60	80	100	100s.

6) Socket head Bolt, Nut and 2 Washers/bolt

Stainless Steel 304 Fasteners

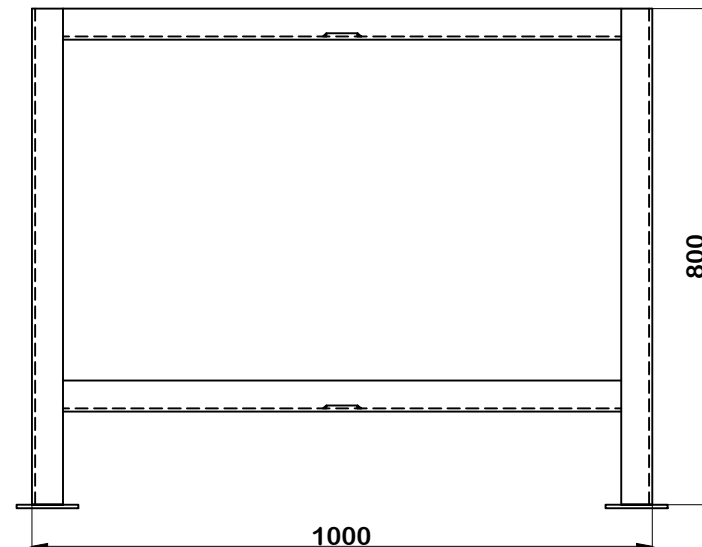
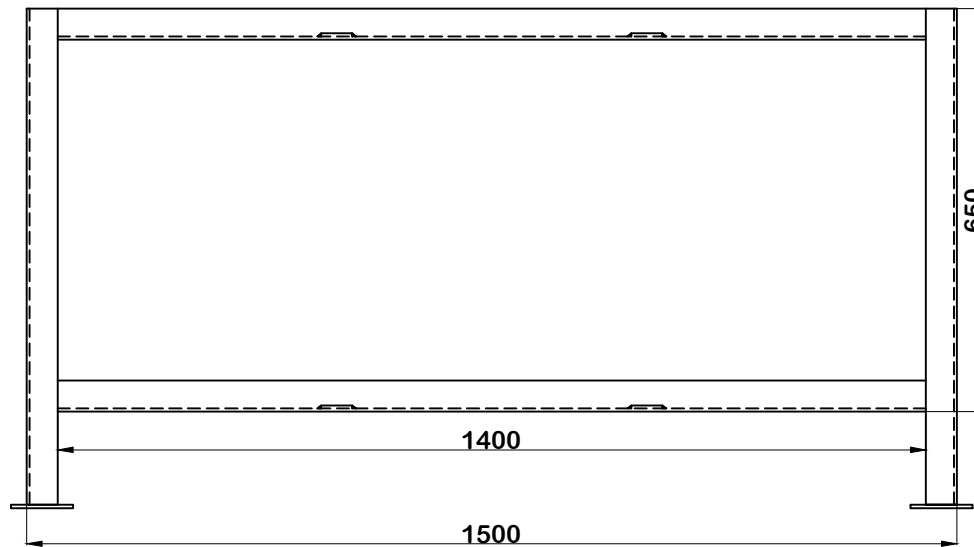
NOMINAL SIZE (D)	LENGTH (mm)				QUANTITY
M4	40	50	60	80	100 nos.
M5	40	50	60	80	100 nos.
M6	40	50	60	80	100 nos.
M8	40	60	80	100	100 nos.
M10	40	60	80	100	100 nos.



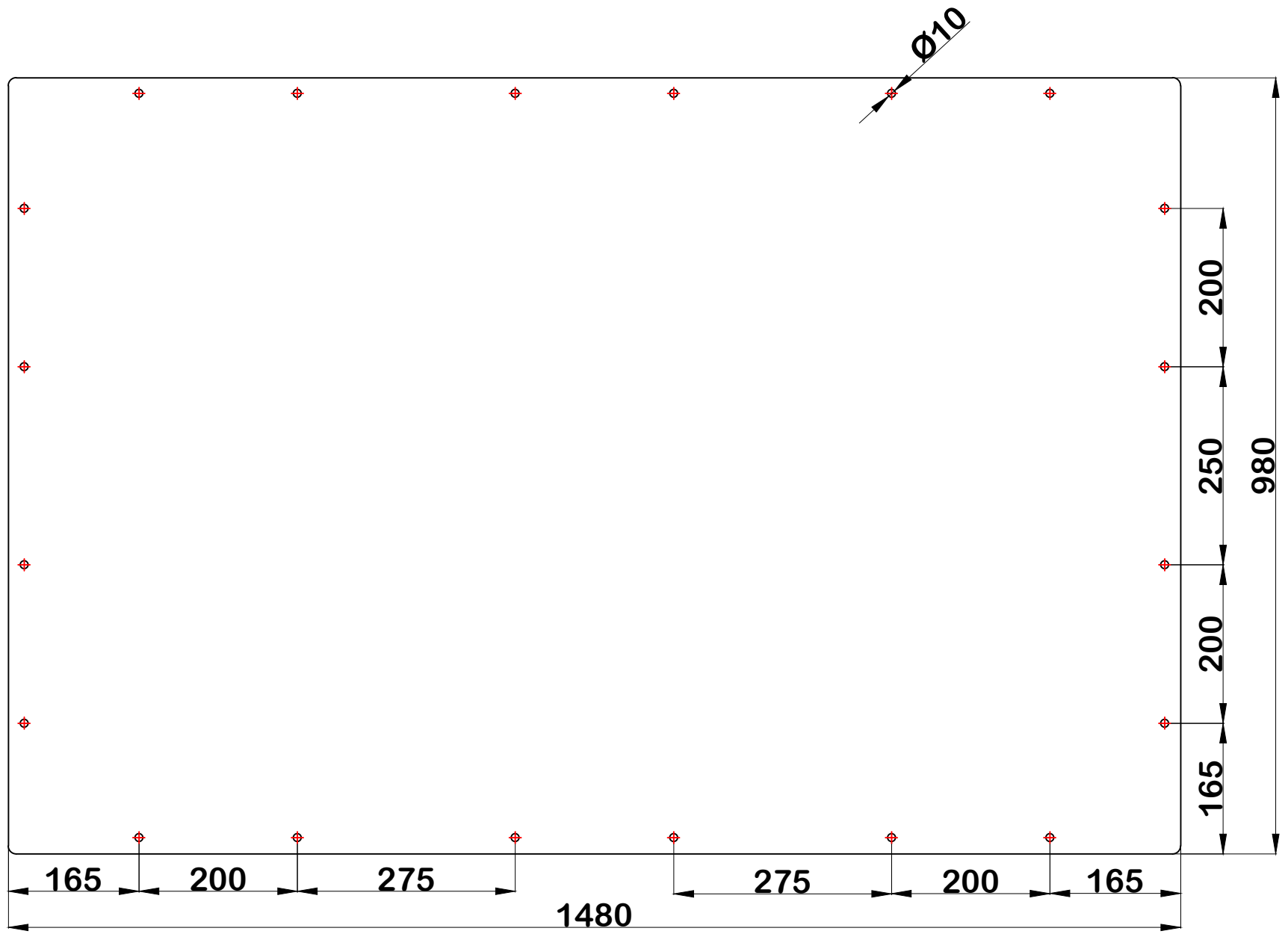
PART No.	DESCRIPTION	MATERIAL	QUANTITY
PART - 1	Angle (50 x 50 x 5)	MS	Qty. - As per drawing
PART - 2	Base Plate (100 x 100 x 6)	MS	Qty. - 4 nos.
PART - 3	Top Plate (1480 x 980 x 8)	MS	Qty. - 1 no.
PART - 4	Rubber Sheet (1480 x 980 x 10)	RUBBER	1 no.
PART - 5	Bottom Plate (1480 x 980 x 10)	NYLON	1 no.
	M8 x 40 Bolt, Nut & Washers	SS 304	1 Sets

Note:

1. All dimensions are in mm.
2. Welded parts should be surface finished.
3. Part - 3 & 4 bolted with table.
4. Painting of all MS parts.

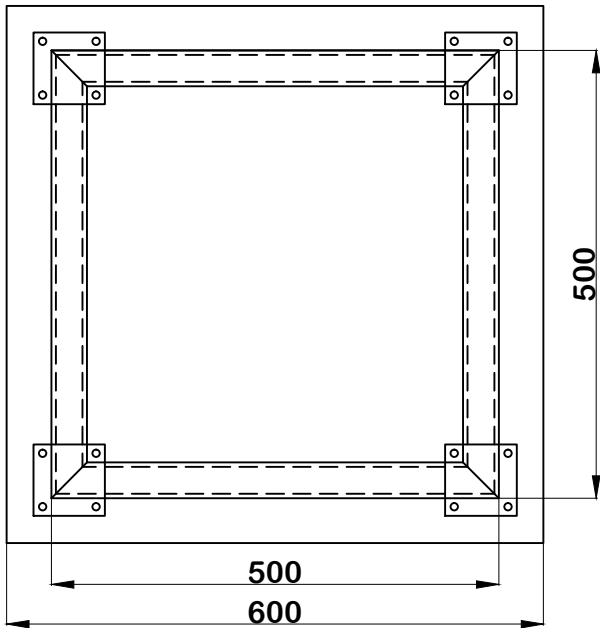


WORK BENCH

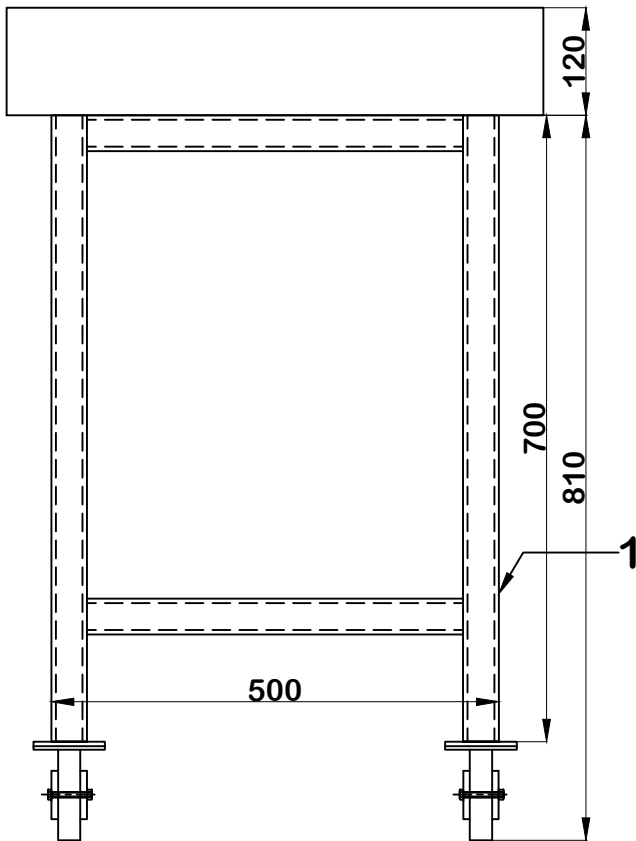
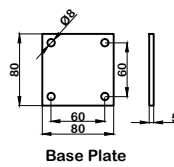


TOP PLATE

PART - 3



PART No.	DESCRIPTION	MATERIAL	QUANTITY
PART - 1	Square Bar (40 x 40 x 5)	MS	Qty. - As per drawing
PART - 2	Base Plate (80 x 80 x 5)	MS	Qty. - 4 nos.
PART - 3	Top Plate (600 x 600 x 120)	Granite Surface Plate	Qty. - 1 no.
PART - 4	3" Castor wheel with lock	Nylon	4 nos.



Note:

1. All dimensions are in mm.
2. Welded parts should be surface finished.
3. Part - 3 bolted with table.
4. Painting of all MS parts.
5. Required fastners should be provide.

SURFACE PLATE STAND