

**Government of India
Bhabha Atomic Research Centre
Multidisciplinary Research Group
Applied Physics Division**

ENQUIRY

Ref: APD/CB/MF/21/MDK/393/P-10808

09/11/2021

Sub: - “Supply and warranty of Mild Steel Platform, Copper Plates and Related Accessories”

Due Date: 17th November, 2021

Dear Sirs,

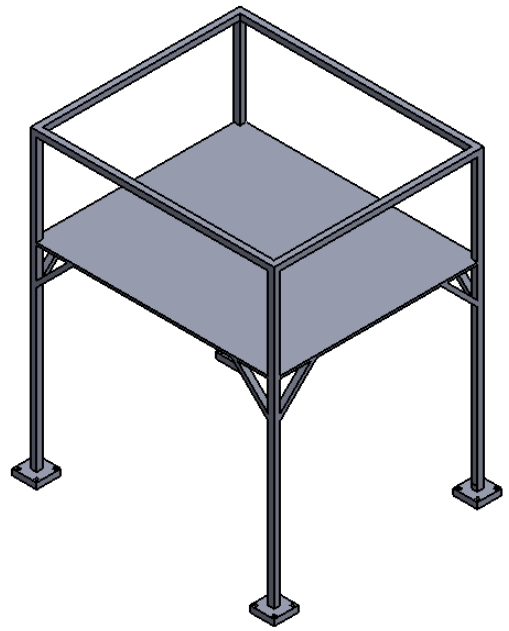
1. Quotations are invited for the minor fabrication job, as per the enclosed specifications and drawings.
2. Bidder shall quote for fabrication of these components with material.
3. Bidder shall take out an insurance policy in favor of BARC for any free issue material supplied.
4. Taxes shall be quoted separately. Form H shall be provided where necessary.
5. The quotations must reach Head, Applied Physics Division on or before the due date referred.
6. **The bidders must quote in a two-part tendering system**, which means that they will mention the technical specifications and financial terms in separate sealed envelopes, clearly mentioning which is which. These two separate envelopes viz. technical and financial will be enclosed in a bigger sealed envelope super scribed with the above reference number and due date.
6. The address on the envelope should read:

The Head,
Applied Physics Division, PURNIMA LABS,
Bhabha Atomic Research Centre
Trombay, Mumbai - 400 085.
Attn: **Mr. Mahesh D. Kale**
7. The fabrication work shall be subject to inspection by our representative. The finished components shall not be dispatched prior to approval by our representative at the bidder's works. Necessary inspection facilities should be provided to our engineers during fabrication at bidder's premises.
8. The bidder shall deliver the finished components after approval by our representative, within 45 days from the date of the firm purchase order issued to the bidder. The finished components shall be delivered by the bidder at **Applied Physics Division, Purnima Laboratory, (Near Plutonium Plant), Bhabha Atomic Research Centre, Trombay, Mumbai-400 085.**
9. Head, Applied Physics Division, BARC, reserves the right to accept/reject any or all quotations without assigning any reason.
10. Payment will be made by cheque only after satisfactory completion of work on production of bill, delivery challan and advance stamped receipt. It may be noted that IT @ 2% and surcharge on tax at 15% shall be deducted from your bills.
11. Job will be guaranteed against material and manufacturing defects for 1 year from the date of supply.

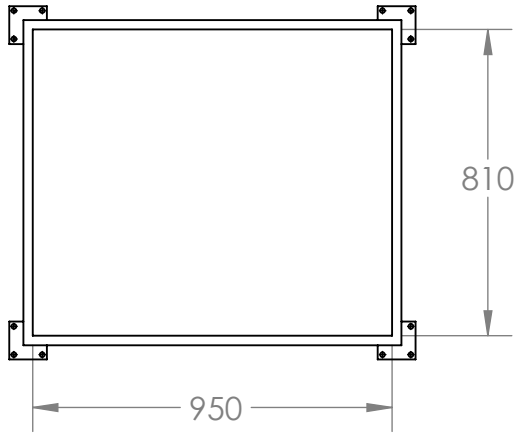
(Mr. Mahesh D. Kale)
For and on behalf of
Head, Applied Physics Division

Job No. 1
Job Name: Platform
Material: Mild Steel
Quantity: 1 No

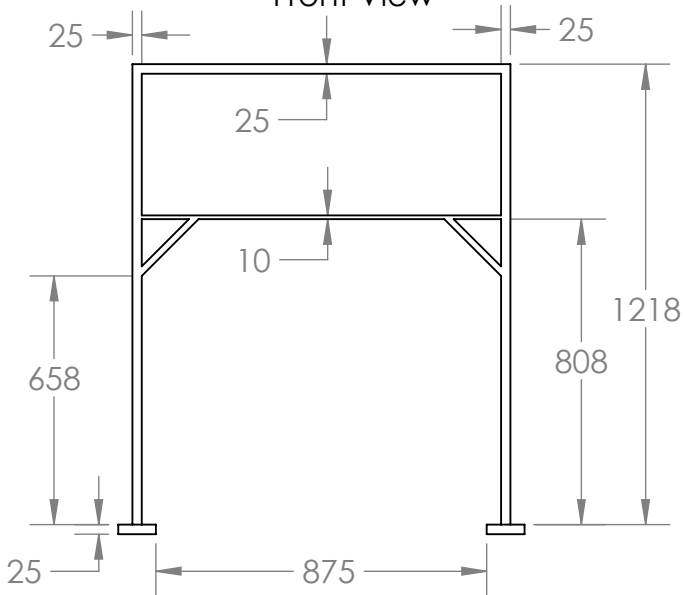
Isometric View



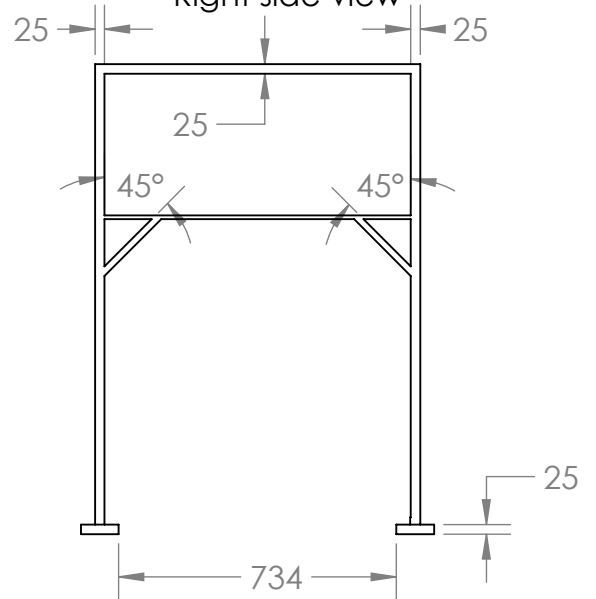
Top View



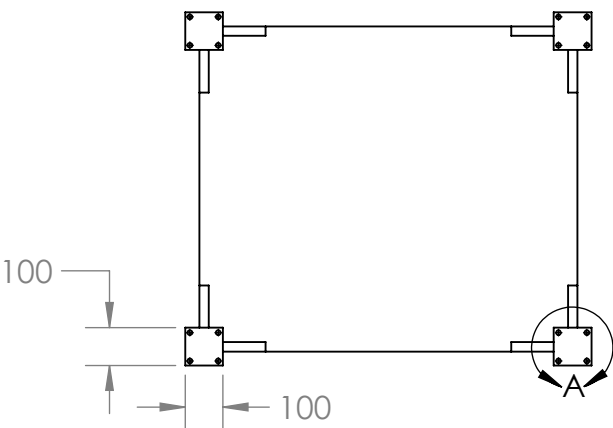
Front View



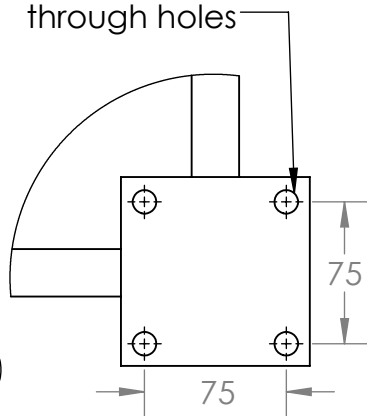
Right side view



Bottom View



M12.5
 through holes



DETAIL A
 SCALE 1 : 4

Note:

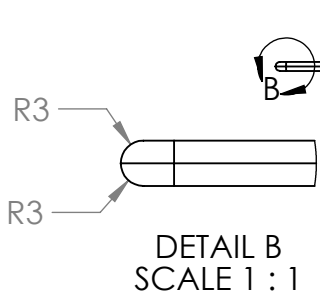
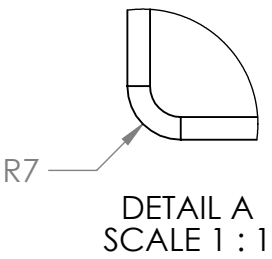
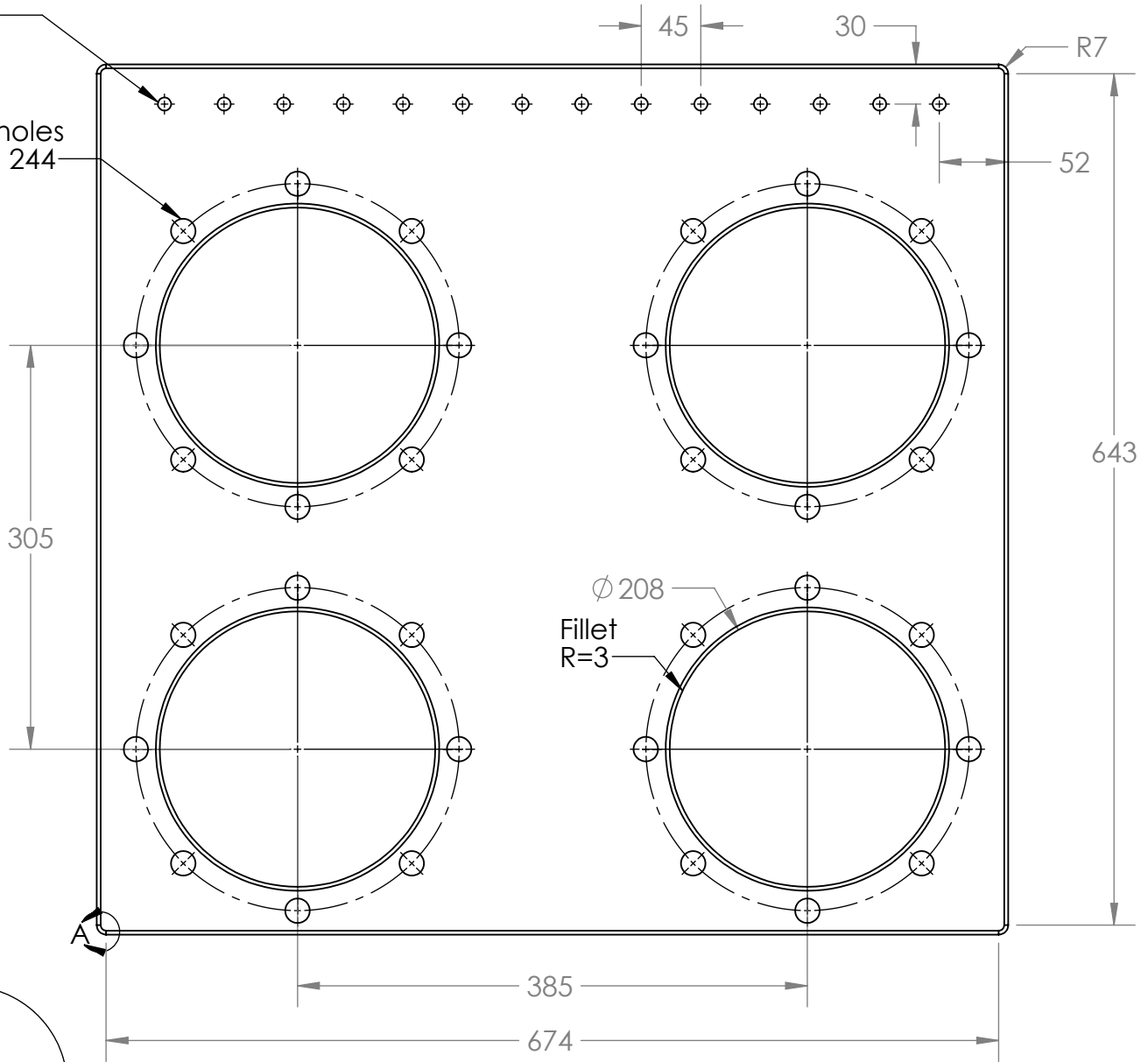
- 1) All dimensions are in mm.
- 2) All joints to be welded.
- 3) Job must be painted black in color.
- 4) Tolerance in dimensions = +/- 0.5 mm.

Job No. 2
Job Name: Copper Plate-1
Material: ETP Gr. Copper
Qty: 1 No.

Top View

10.5 mm dia through holes (14 Nos.)

18.5 dia through holes at PCD = 244



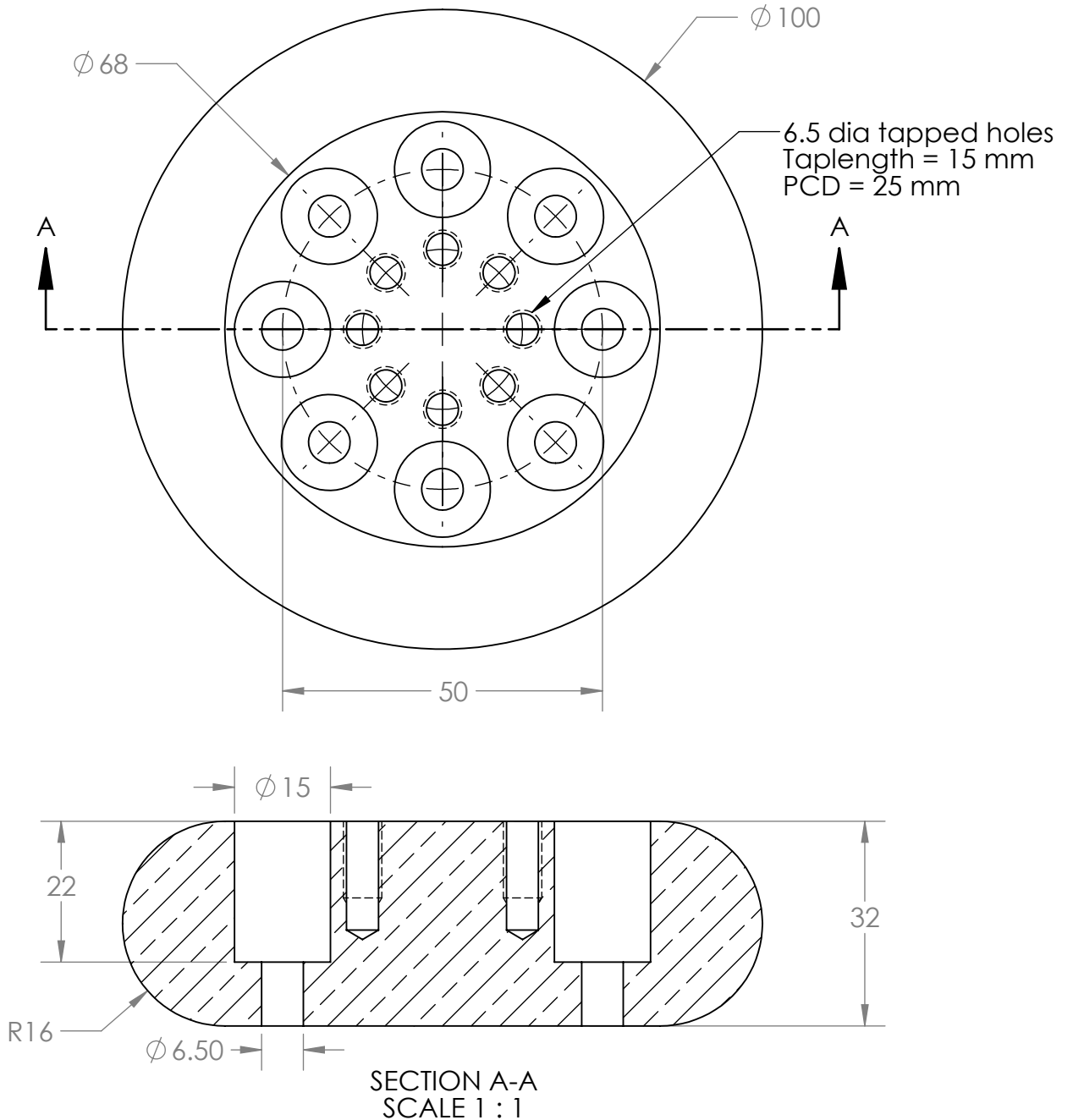
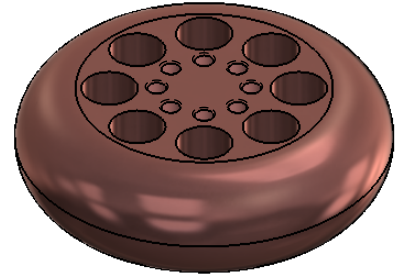
Front View



- Note:**
- 1) All dimensions are in mm.
 - 2) Tolerances in dimension = +/- 0.5 mm
 - 3) Chemical analysis test must be carried out from a government certified institution and certificate must be provided before bulk procurement of materials.

Job No. 3
Job Name: Copper Raise
Material: ETP Gr. Copper
Quantity: 5 Nos.

Isometric View

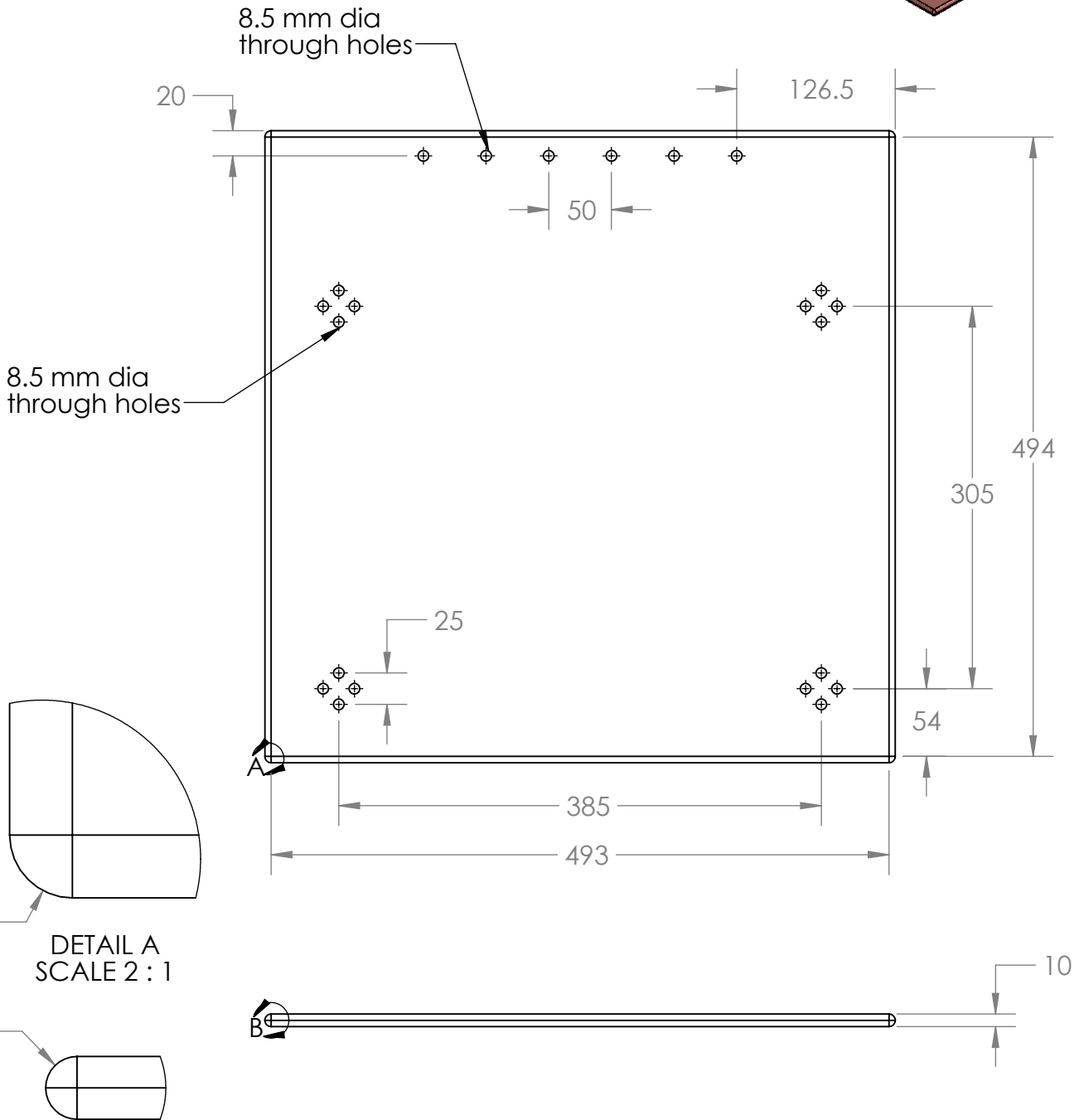
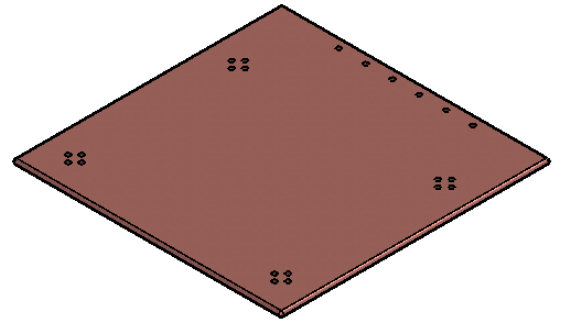


Note:

- 1) All dimensions are in mm.
- 2) Tolerances in dimension = ± 0.5 mm
- 3) Chemical analysis test must be carried out from a government certified institution and certificate must be provided before bulk procurement of materials.

Job No. 4
 Job Name: Copper Plate-2
 Material: ETP Gr. Copper
 Quantity: 1 No.

Isometric View

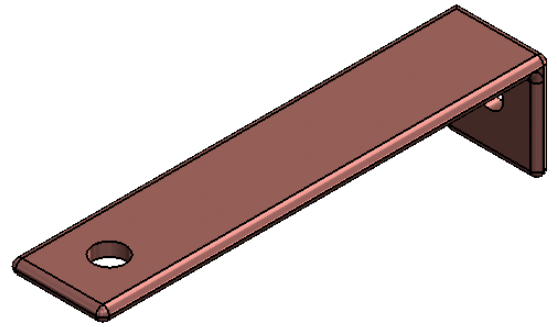


Note:

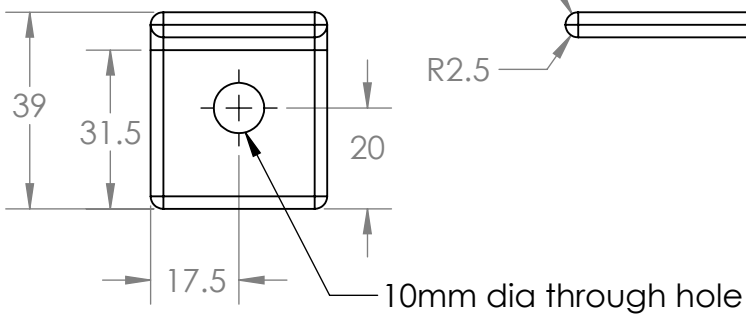
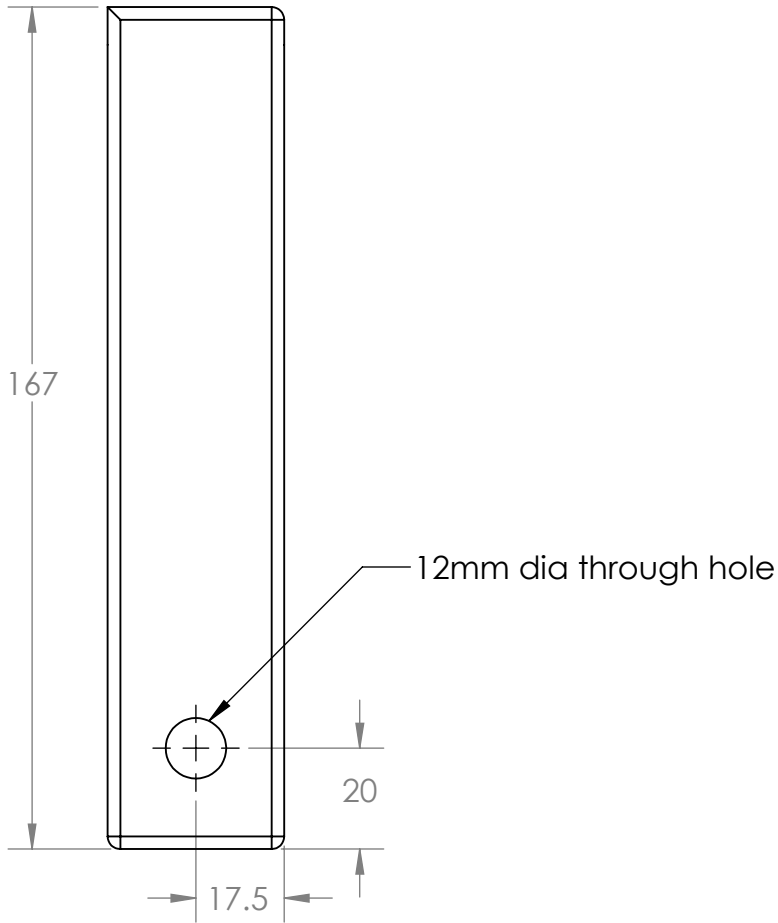
- 1) All dimensions are in mm.
- 2) Tolerances in dimension = ± 0.5 mm
- 3) Chemical analysis test must be carried out from a government certified institution and certificate must be provided before bulk procurement of materials.

Job No. 5
Job Name: Connector - 1
Material: ETP Gr. Copper
Quantity: 8 Nos.

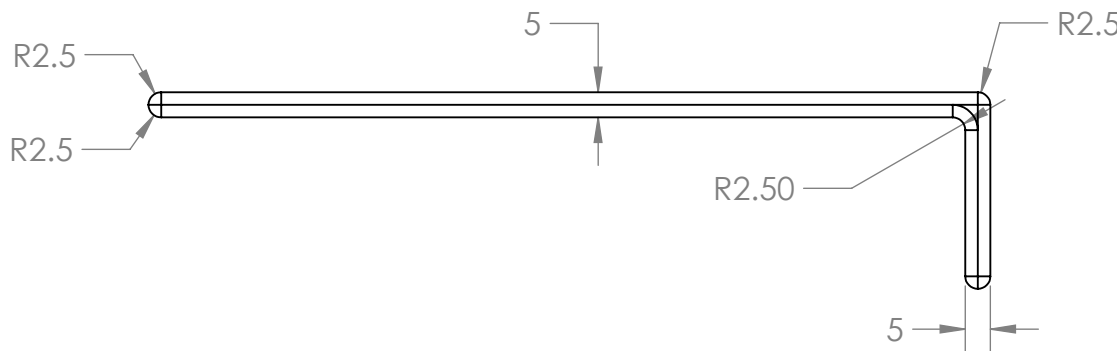
Isometric View



Top View



Front View



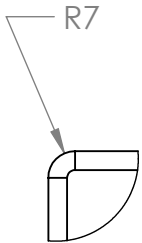
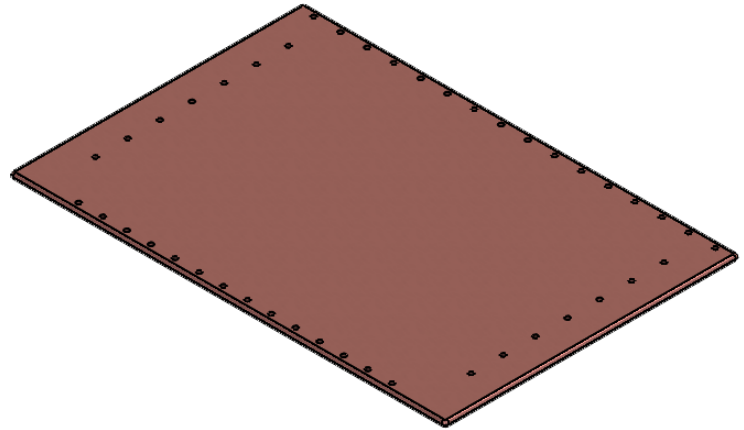
Right side view

Note:

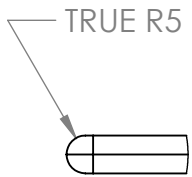
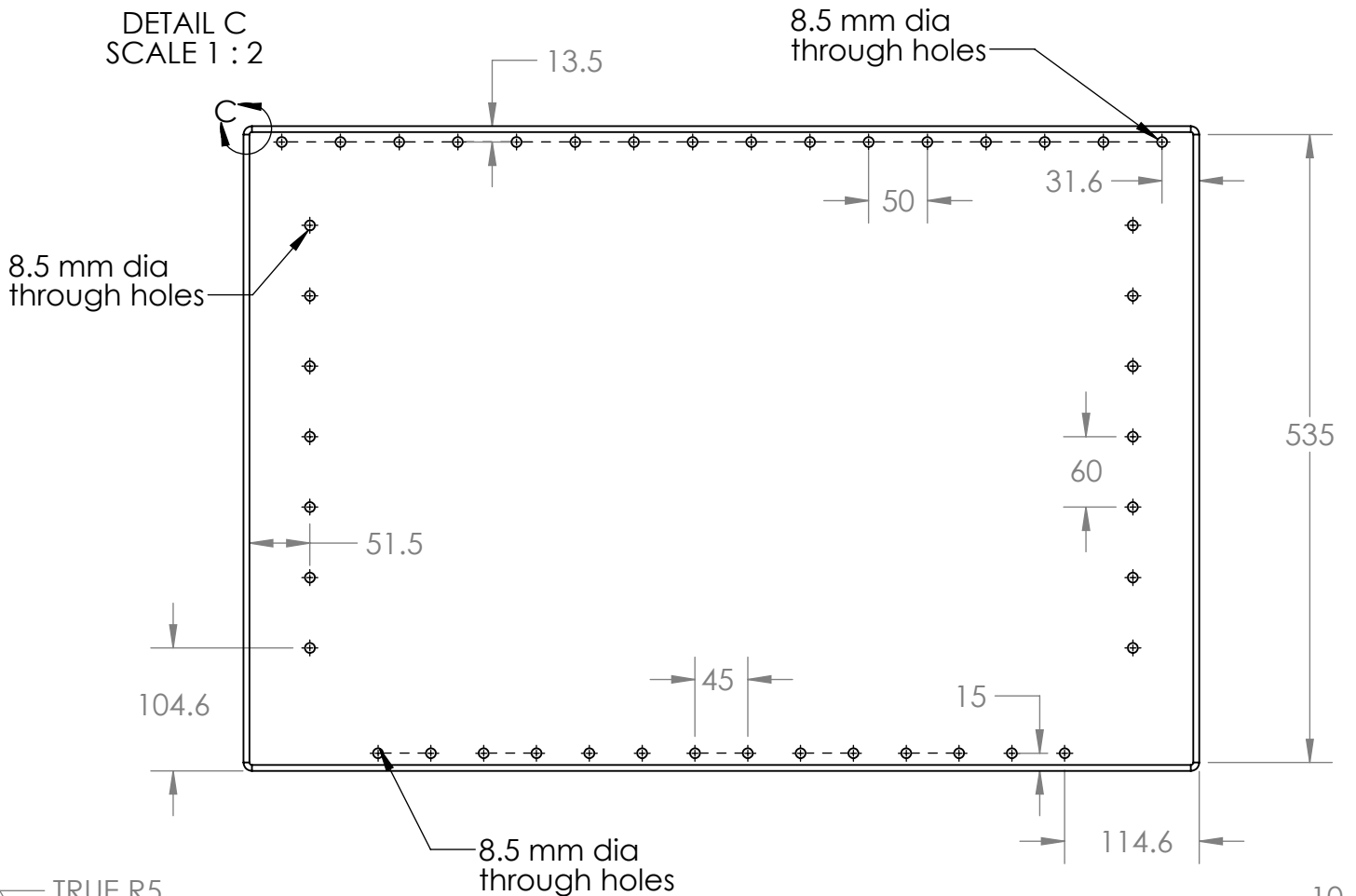
- 1) All dimensions are in mm.
- 2) Tolerances in dimension = ± 0.5 mm
- 3) Chemical analysis test must be carried out from a government certified institution and certificate must be provided before bulk procurement of materials.

Job No. 6
 Job Name: Copper Plate -3
 Material: ETP Gr. Copper
 Quantity: 1No.

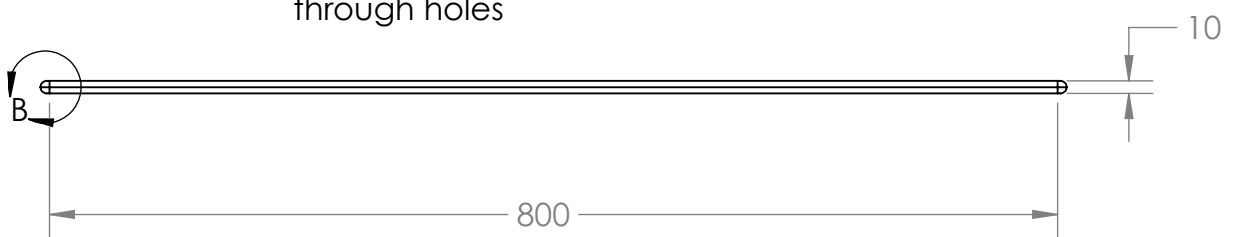
Isometric View



DETAIL C
 SCALE 1 : 2



DETAIL B
 SCALE 1 : 2



Note:
 1) All dimensions are in mm.
 2) Tolerances in dimension = +/- 0.5 mm
 3) Chemical analysis test must be carried out from a government certified institution and certificate must be provided before bulk procurement of materials.