



R K Rajawat
Head, APPD
BTDG, BARC
rkraj@barc.gov.in

Government of India
Bhabha Atomic Research Centre
Accelerator and Pulse Power Division

Engg. Hall No.4, Trombay,
Mumbai-400085
Tele: (+9122)25593785

Ref.: BARC/APPD/SK/2019/89

Date: 14/10/2019

Subject: Inviting quotations for fabrication of high voltage strip line chamber and accessories .

Dear Sir,

You are requested to quote for the fabrication of high voltage strip line chamber and accessories

S. no.	Item	Quantity	Material	Delivery
1.	Fabrication of high voltage strip line chamber, buffer chamber, end flange, voltage divider, resistive load, chamber support, inductor, supports and connecting plate	1	SS304L, Perspex Copper, Mild steel	Within 30 days from the final work order.

1) For any clarifications and detailed drawings the supplier can contact Mr. Senthil K, SO/F, APPD on any working day (Monday to Friday) on telephone Nos. 25590172 or email: senthilk@barc.gov.in.

2) Supplier should maintain the desired accuracies, precautions, finishes and material quality, failing to which may result in rejection of the job.

3) It is mandatory that supplier must have prior experience in fabrication and handling of similar jobs Documentary proof must be submitted along with your offer (Completed Work Order).

4) Payment for the above work will be made after satisfactory completion of job and on production of bill & advanced stamped receipt along with the copy of registration. No advance payment will be made for this work since ours is a Government organization. Income-tax @2% & surcharge on Income-tax @15% will be deducted from the bill and a TDS (tax deducted at source) certificate will be issued as per Income-tax rules.


Suppliers should submit their offers along with the following information.

(a) period of validity, terms & conditions of the offer, (b) Approximate period of completion of the task and (c) copy of the registration and income-tax clearance certificate.

Additional Information:

Your sealed quotation (in your letter head) including all details, like taxes to be paid, transport charges etc., duly indicating our reference number mentioned, due date of quotations and our reference no. on the envelop, may be sent to "**APPD, Engg. Hall No.4, Trombay, MUMBAI-400085**", on or before, **23rd Oct 2019**. It is requested that the tender must be sent by Speed-post only. The quotations received after the due date & by FAX/email/courier will not be considered.

Yours faithfully,


Signature of the indenter

(Senthil K)
SO/F, APPD, BARC

Copy to: A.P.O., GSS Section, Central Complex, BARC.

Specification sheets for fabrication and supply of high voltage strip line chamber and accessories.

Components should be fabricated as per drawings mentioned above and specifications given below. In case of doubt in understanding please ask for clarification.

1. General:

- (a) The fabricated parts should have super-finished surfaces as given in the drawings. The stainless steel plates/rods of SS-304L should be used in fabrication and then the surfaces are to be polished.
- (b) The fabricators must submit their own fabrication drawings after acceptance of work order. The fabrication drawings should be got approved before starting the job.
- (c) The indenter reserves the right to make modifications and alterations in the drawings as well as to inspection at every stage of fabrication, testing and assembly. The fabricators should carryout minor modifications without extra cost.

2. Materials: a) All the stainless steel parts mentioned in the drawings of are to be fabricated using the SS-304L stainless steel rods of suitable diameter. Perspex components must be fabricated from good quality imported Perspex sheet with good surface finish should be used. The surfaces are to be polished by buffing after fabrication. The fabricated parts should have super-finished surfaces as given in the drawing.

3. Fabrication: a) The fabrication of components shall be in accordance with best quality shop practice and conform strictly to dimensions, tolerances and instruction given in the drawings & specifications. All the finished parts are true, flat, smooth, mirror polished, corners rounded off, free of weld spatter, etc. Exposed surface shall be protected from damage at all times.

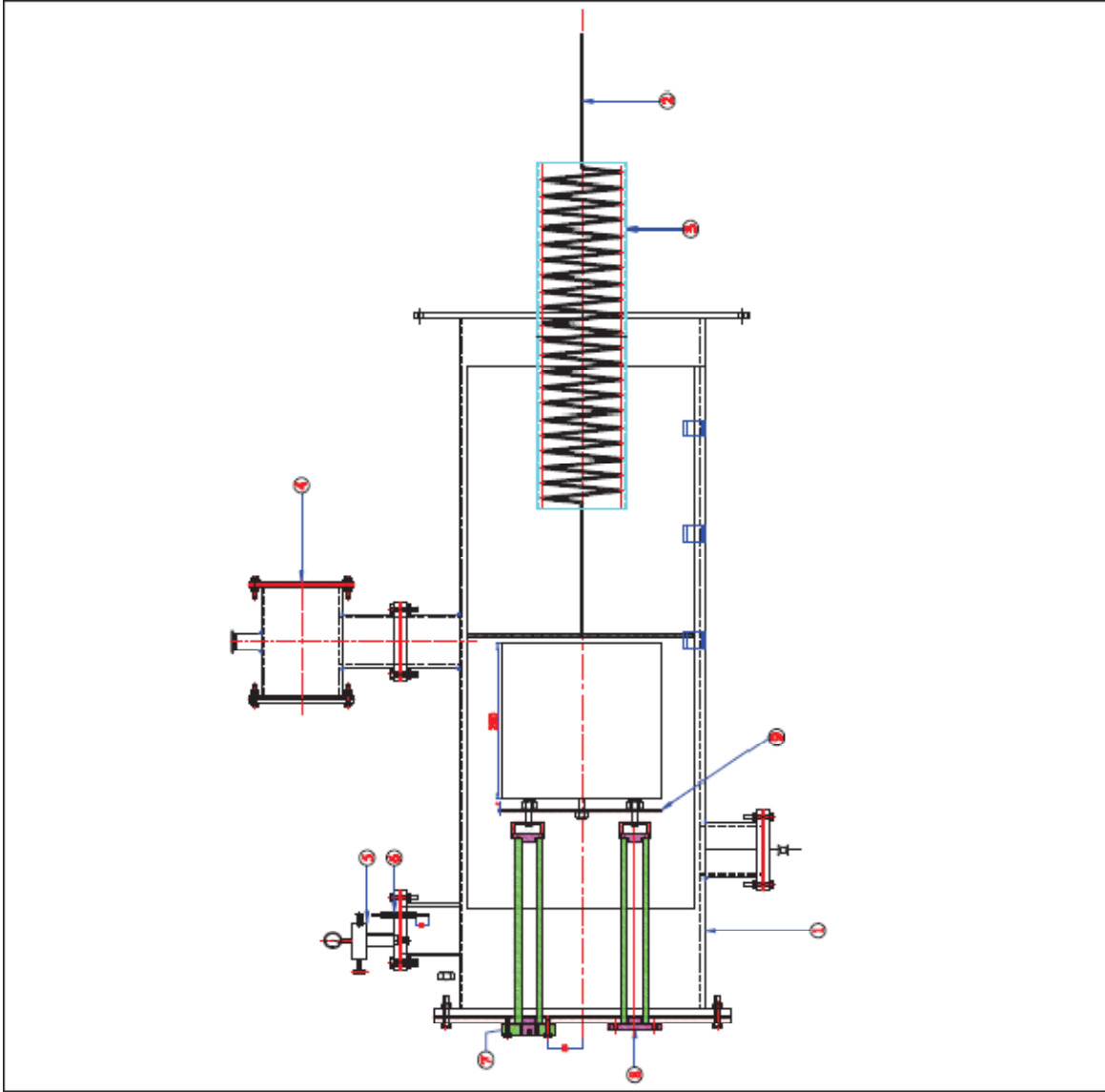
b) All the fabricated parts should have super-finished surfaces as given in the drawings m by grinding, machining, lapping with abrasives and electro-polishing to RMS 0.8μ if necessary.

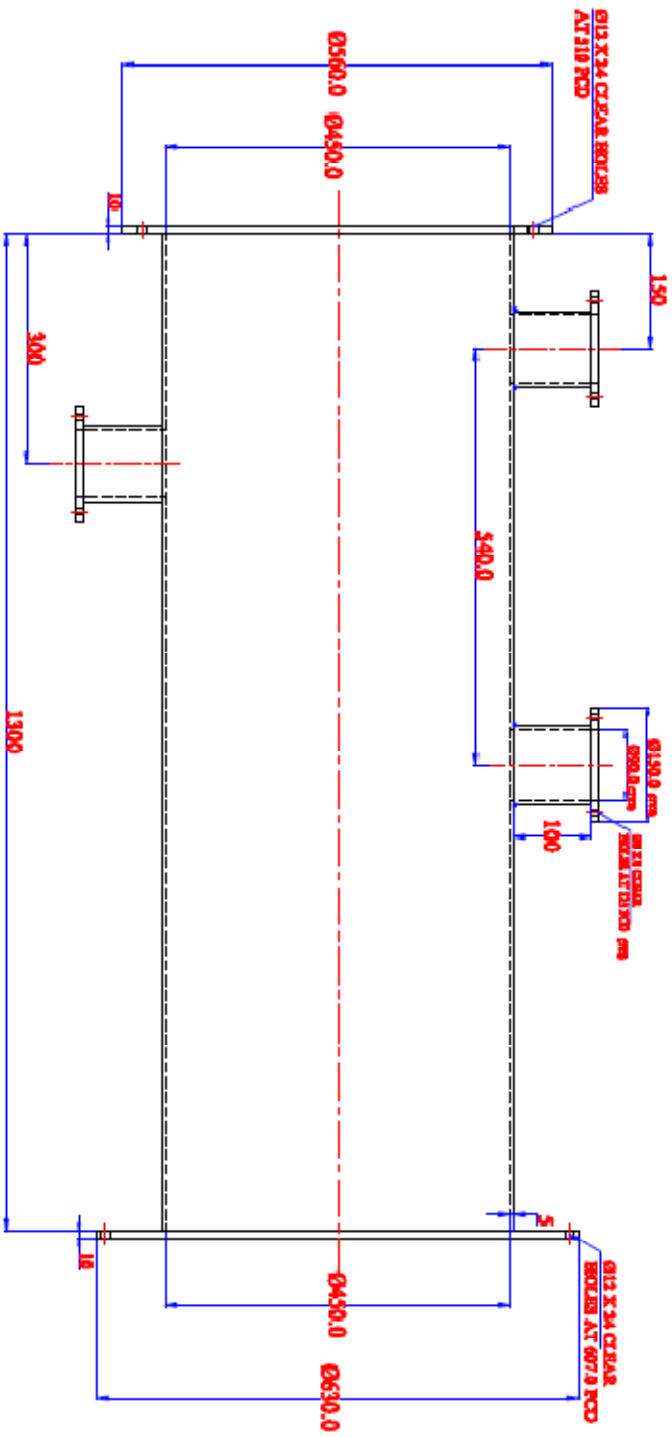
c) A general tolerance of +0.1% on all fabricated parts and 0.05% on machined parts shall be provided unless otherwise specified. Similarly a general tolerance of $\pm 0.30'$ shall be provided on all angles. All gasketed surfaces should be super-finished to RMS $0.8\mu\text{m}$

4. Cleaning:

a) All inside surfaces shall be degreased and then flushed with clean water. The degreasing agent shall not contain halogens. Final cleaning shall be performed with hot water wash using a commercial detergent followed by hot water rinse. Surfaces shall be completely cleaned and degreased

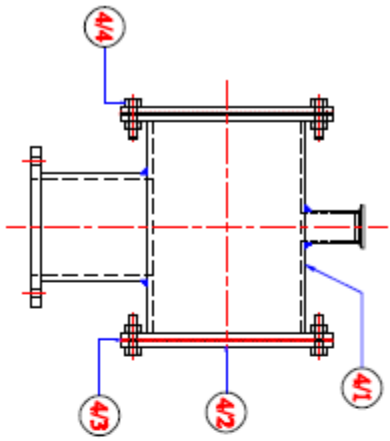
PART ENO. NO.	DESCRIPTION	MATERIAL	QTY
1	SS CHAMBER LGT 1300, ID 450	SS304	1
2	HELICOIL LGT 600, DIA. 150	COPPER	1
3	TUBES LGT 600, ID 160 OOD 170	FRIBOPK	1
4	OIL-SLIPPER TANK	SS304	1
5	PRESSURE GAUGES WITH VALVE		1
6	FEED THERMOC	BRASS- NITLON	1
7	LOAD	FRIBOPK	2
8	E.V DIVIDER	FRIBOPK	2
9	CONNECTING PLATE	SS304	1
10	OUTER CHAMBER SUPPORT	ALU	3



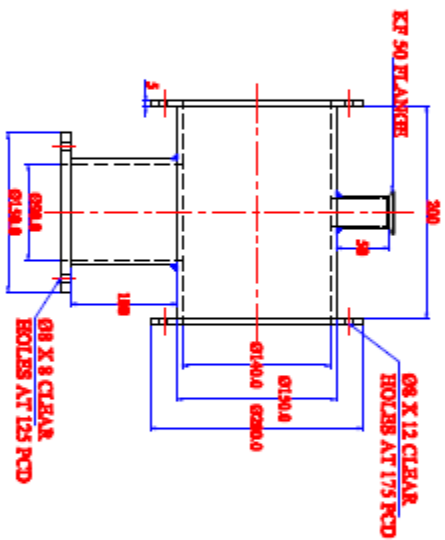


PART -1

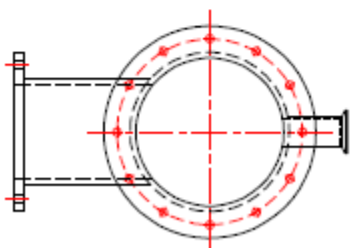
**MATERIAL SS 304
QTY 1**



PART -4



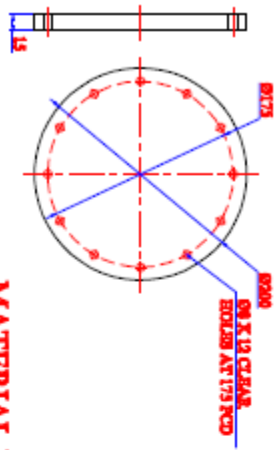
FRONT VIEW



SIDE VIEW

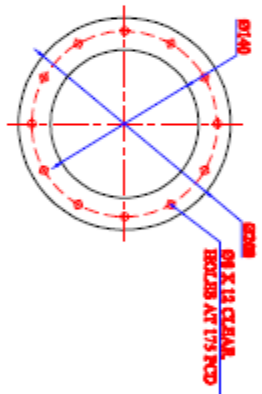
PART 4/1

**MATERIAL SS304
QTY 1**



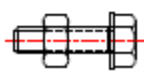
PART 4/2

**MATERIAL PERSPEX
QTY 2**

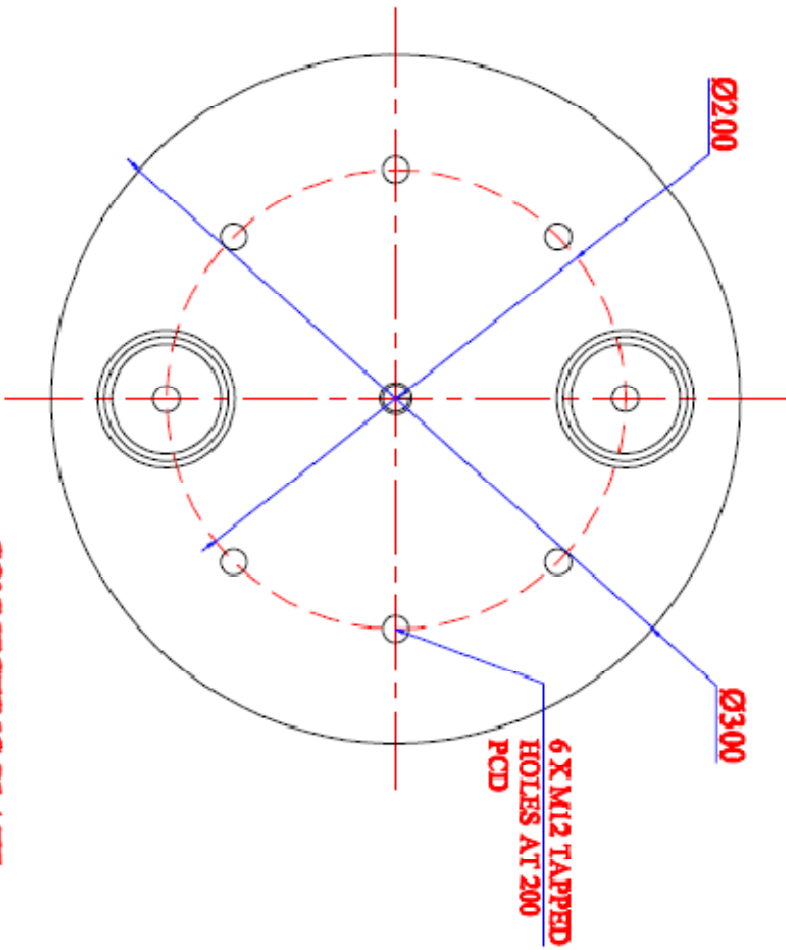
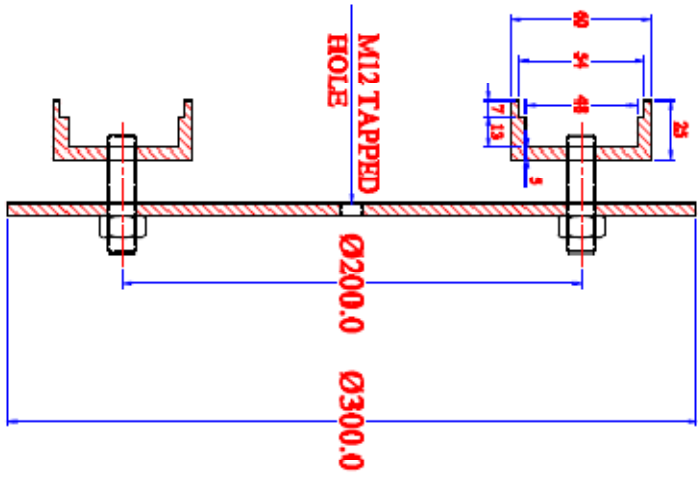


PART 4/3

**MATERIAL NEOPRENE
QTY 2**



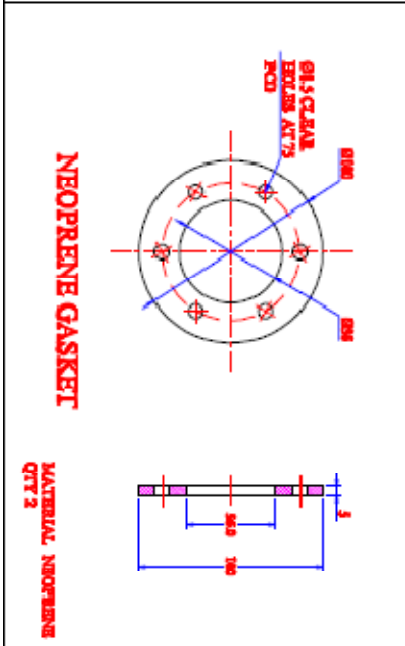
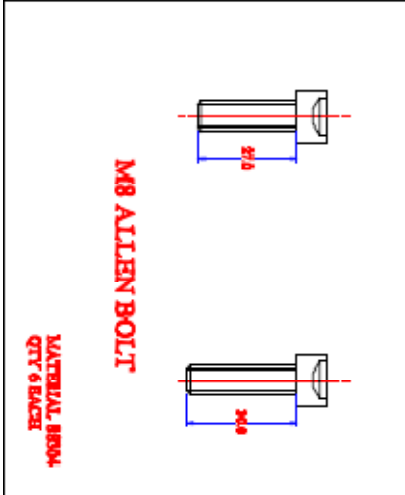
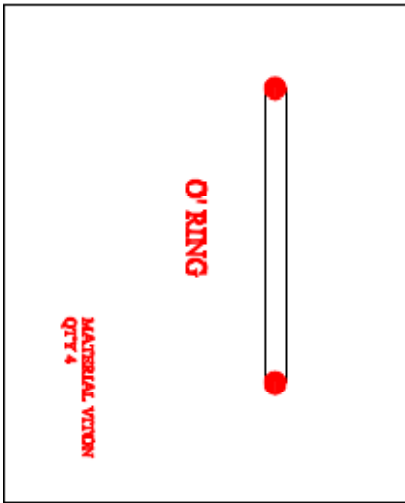
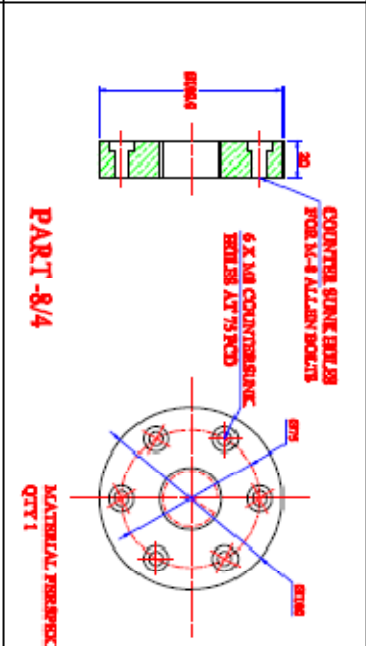
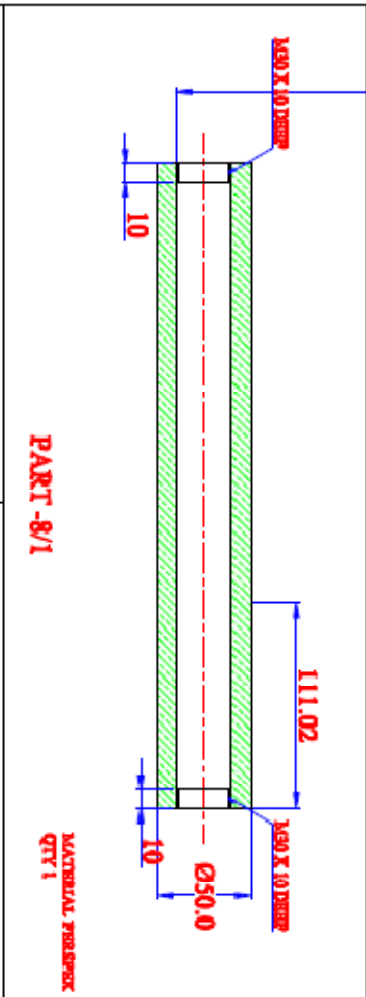
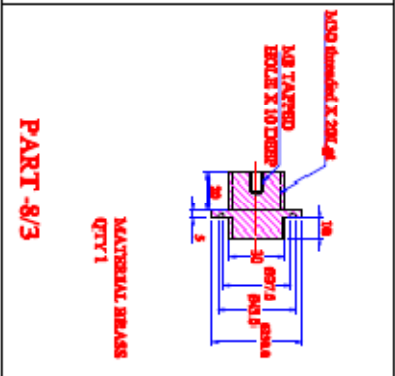
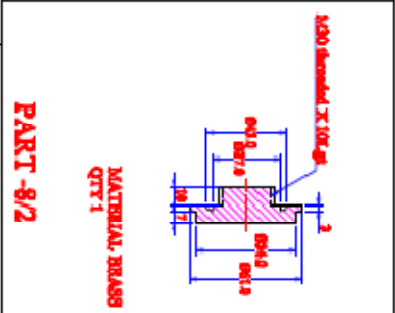
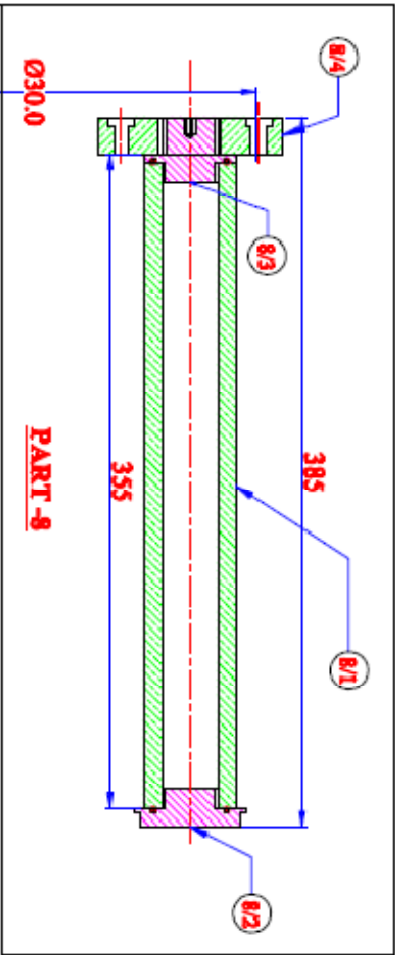
**M-8 BOLTS WITH NUT
AND WASHER
MATERIAL SS304
QTY 24
PART 4/4**

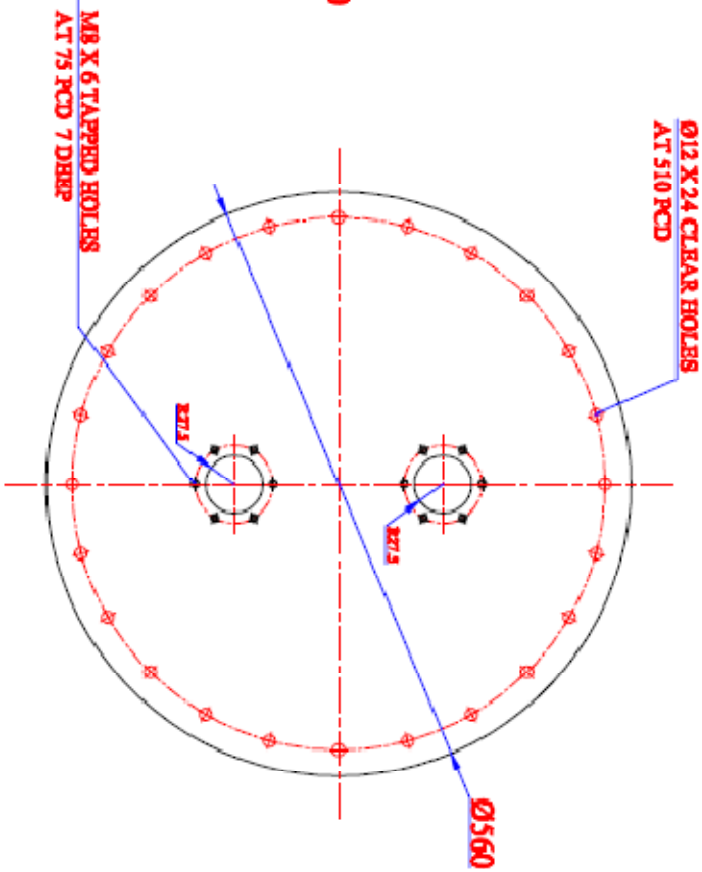
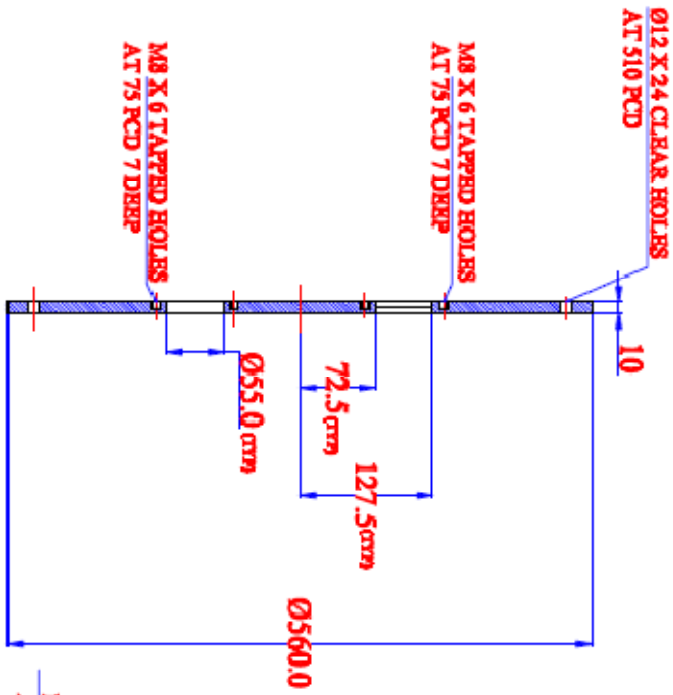


CONNECTING PLATE

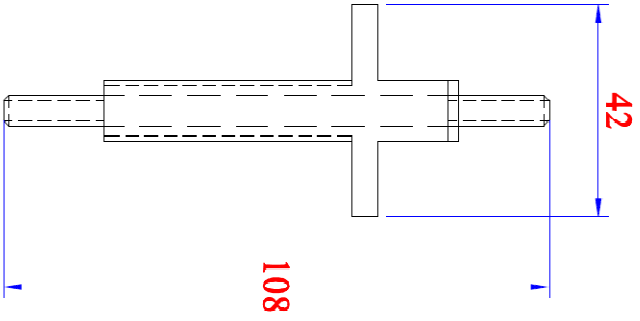
MATERIAL SS304
QTY 1

PART -7

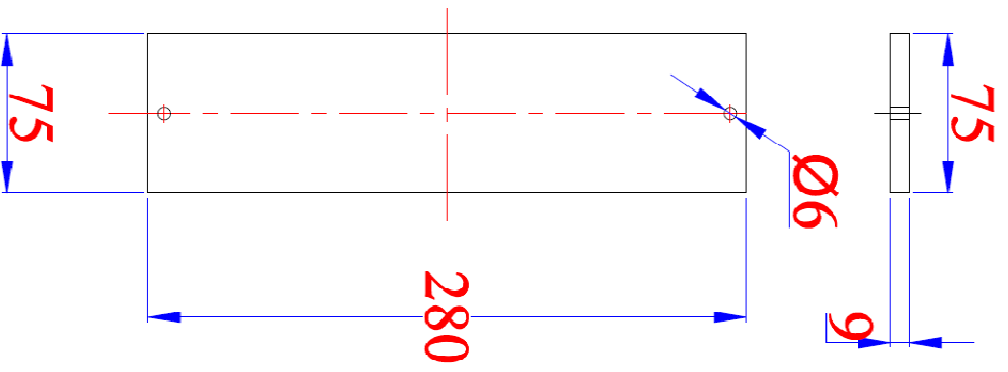




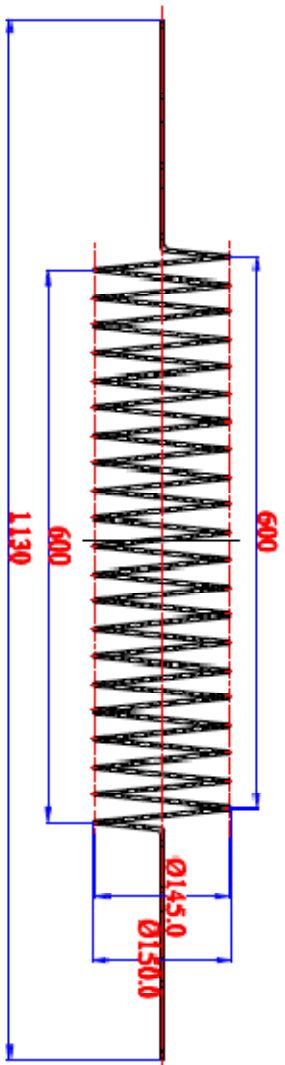
MATERIAL SS304
QTY 1



MATERIAL NYLON/SS
QTY 1



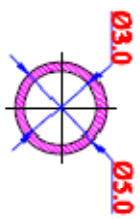
MATERIAL SS304
QTY 2



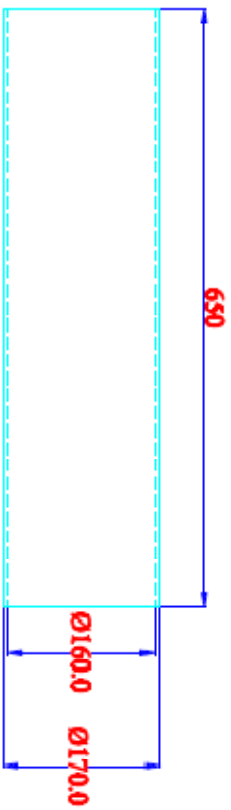
HELICOIL LGT 600MM, 20 TURNS, DIA 150MM, TUBE OD
5MM, ID 3MM

PART -2

MATERIAL COPPER
QTY 1



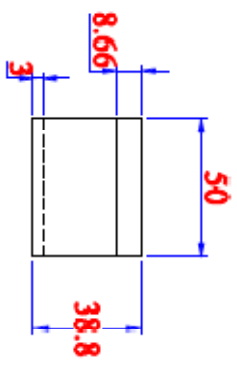
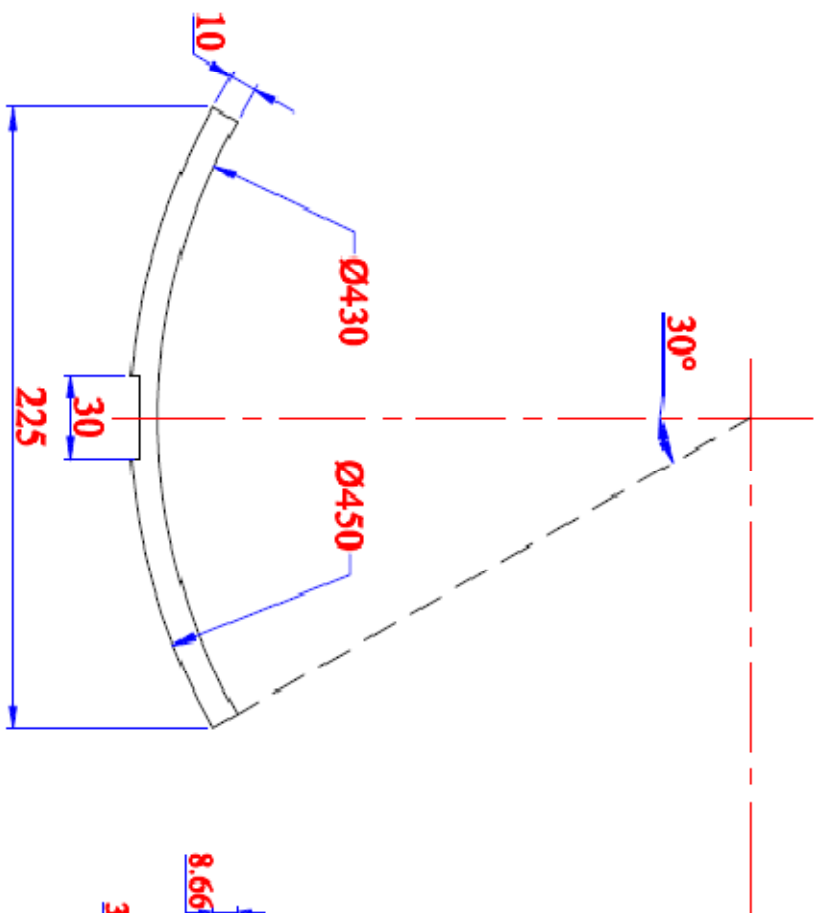
TUBE
CROSS-SECTION



PERSPEX TUBE

PART -3

MATERIAL PERSPEX
QTY 1



MATERIAL PERSPEX
QTY 4

